



2025



COMMUNITY GUIDE & BUSINESS DIRECTORY

Middletown . Odessa . Townsend

Delaware's trusted funeral home since 1906

Community Minded. Family Owned.



Bringing comfort to families by creating personalized and meaningful ceremonies to celebrate the life of a loved one and ensure their legacy is remembered.

We are honored to be the first funeral home in Delaware inducted into the National Funeral Directors Association Hall of Excellence.



◆ 1000 N. DuPont Parkway
New Castle, DE 19720
(302) 328-2213

◆ 121 W. Parl Place
Newark, DE 19711
(302) 368-9500

◆ 214 Clinton Street
Delaware City, DE 19706
(302) 834-4524

◆ 275 E. Main Street
Middletown, DE 19709
(302) 378-0300



WHAT’S INSIDE

1-2	NEW CASTLE COUNTY FACTS AND STATS	20	A MESSAGE FROM THE MIDDLETOWN MAYOR	41	ORGANIZATIONS
6	IMPORTANT PHONE NUMBERS	21-24	A SHORT HISTORY OF MIDDLETOWN, ODESSA + TOWNSEND	42	TRANSPORTATION
8	BUSINESS ASSISTANCE			43	MOTOR VEHICLES
9	TAX ADVANTAGES IN DELAWARE	26	A MESSAGE FROM THE ODESSA MAYOR	45-46	SCHOOLS, COLLEGES + LOCAL HOUSES OF WORSHIP
10	A MESSAGE FROM THE MACC PRESIDENT	28	MIDDLETOWN GOVERNMENT	47-51	ATTRACTIONS, PERFORMING ARTS, ANNUAL EVENTS + M.O.T. AREA PARKS, RECREATION & CULTURAL ACTIVITIES
12-13	MIDDLETOWN AREA CHAMBER OF COMMERCE	29	PERMITS, TAXES + UTILITIES		
15	MEMBERSHIP BENEFITS	34-35	M.O.T. AREA MAP	53-65	MEMBERSHIP SERVICES DIRECTORY
17	NETWORKING GROUPS	38-39	ODESSA, TOWNSEND + NEW CASTLE COUNTY INFO	66	A MESSAGE FROM THE EXECUTIVE DIRECTOR
		40	A MESSAGE FROM THE TOWNSEND MAYOR		

ACKNOWLEDGMENTS

PHOTOGRAPHY
Cover Photos and photos throughout supplied by MACC, Andreas Stahl, John Falla, Avi Gold, 302 Media.

LAYOUT
Designed by Launch Design Collective, LLC. LDCandCo.com

NEW CASTLE COUNTY
FACTS + STATS

Located in the Mid-Atlantic section of the eastern seaboard, Delaware is bordered by the Atlantic Ocean and the Delaware Bay, and by New Jersey, Pennsylvania and Maryland. The northern most county, New Castle, offers easy access to the major metropolitan areas of the Northeast.

CLIMATE

Middletown has a moderate climate, with an average monthly temperature range of 32°F (January) to 76°F (July) with four distinct seasons. Rainfall averages 45” per year, and snowfall 20”. The mild climate and long growing season allow for two, sometimes three different crops in one year.

COMMUNITY PROFILE

More than 30,000 citizens reside in the Middletown/ Odessa/ Townsend area, known as the M.O.T. area.

QUICK SPECS

LARGEST MUNICIPALITIES

Wilmington	71,146
Newark	30,736
Middletown	26,901
Odessa	352
Townsend	2,953

INCOME (2020 CENSUS)

Median Household:	\$93,750
Per Capita Income:	\$46,790

COST OF LIVING

The cost of living in Delaware has been calculated to be 4% higher than the national average. Housing is 4% higher than the national average, while utilities are 4% lower. However, Delaware residents enjoy a median household income that's eight percent higher than the national average, high wage job opportunities in lucrative industries, a diverse range of affordable housing, and a low tax burden without state-level property taxes and sales tax.

SHOPPING

Delaware offers excellent shopping opportunities—all TAX-FREE! Major shopping malls located within Delaware's larger communities and near major highways throughout Delaware offer selection and convenience for shoppers. Delaware also boasts a wide selection of company outlet stores, discount stores and hundreds of antique shops.

LABOR & EMPLOYMENT

Labor Force (Civilian)	511,100
Unemployment Rate	4.2%

For additional labor market information, visit

www.delawareworks.com or labor.delaware.gov/divisions/oelmi/

EDUCATION (AS OF FALL OF 2023)

Source: Delaware Department of Education

Public School Districts:	Enrollment
Appoquinimink	12,466
Brandywine	10,401
Christina	13,397
Colonial	9,531

NEW CASTLE COUNTY

Vo-Tech	4,644
Red Clay	14,837

COLLEGES AND UNIVERSITIES

Delaware College of Art and Design
Delaware State University
Delaware Technical and Community College
Goldey-Beacom College
Margaret Rollins School of Nursing
Strayer University
University of Delaware
Widener University School of Law (Delaware Campus)
Wilmington University

STATE OF DELAWARE

Population	1,044,321
Average Household	2.51
Median Household Income	\$80,750





WELCOME TO THE COMMUNITY GUIDE & BUSINESS DIRECTORY

The Middletown Area Chamber of Commerce is dedicated to promoting business and enhancing the quality of life in the Southern New Castle County area. Chamber members take leading roles in important community and business programs, working to enhance and preserve the special lifestyle that is unique to Middletown, Odessa, and Townsend (MOT) communities. We are actively involved in fostering economic development and community spirit for the MOT and surrounding areas.

maccde.com



MIDDLETOWN AREA CHAMBER OF COMMERCE

**Building a Stronger
Community Together**

Dedicated to promoting business and enhancing the quality of life in Southern New Castle County and the surrounding areas.



The Middletown Business Incubator and Collaborative Workspace (MBI) serves as an enterprise business center that provides resources for businesses and entrepreneurs. By inspiring entrepreneurship through opportunity, the MBI will foster economic growth for the MOT and surrounding areas. It is coordinated through the MACC Foundation, a 501 (c) 3 non-profit organization.

For more information: call [302.378.7545](tel:302.378.7545) or visit mbide.com





Welcome to the Town of Middletown.

We are happy to have you join our community and look forward to seeing you out and about during our events.



If you are in need of our assistance,
please reach out to us.
We are here to help.

Town Hall (302) 378-2711

Open Mon - Fri 8am - 4pm

Public Works (302) 378-2211

Open Mon - Fri 7am - 3:30pm

Utility payments (302) 378-2711

Middletown Police (302) 376-9950



19 W. Green Street • Middletown, DE 19709
302-378-2711 • Middletown.delaware.gov



CONNECT

with your local community.

BE INFORMED

about the actions of local government.

ENJOY

reading about local entertainment.

SHARE

your viewpoint on our Opinion page.

LAUGH

at the daily comics.

CHEER

your favorite sports teams.

READ

local news, online anytime.

\$5

per month
or

\$55

per year

for unlimited digital
access to the State
News e-Newspaper and
BayToBayNews.com

**SUBSCRIBE
HERE**



BayToBayNews.com/subscribe-today



PHONE NUMBERS YOU CAN USE

OTHER EMERGENCY NUMBERS

Walk-In Medical Care for minor injuries and illness	302-449-3100
Delaware Help Line	211
Domestic Violence Hotline	302-762-6110
Suicide Hotline	988 or 800-652-2929
Rape Crisis Contact	800-773-8570
Child Abuse Hotline	800-292-9582
Child Mental Health Services	800-969-4357
Poison Control Center	800-222-1222
Crime Stoppers	302-739-5927
Or 800 (TIP) 3333	
New Castle County Police non-emergency	302-573-2800
State Police Troop 9 non-emergency	302-378-5749
Middletown Police non emergency	302-376-9950
Christiana Care Emergency Department	302-733-1000
UTILITIES	
Artesian Water Company	302-453-6900
Chesapeake Utilities	800-427-2883
Tidewater Utilities	877-720-9272

TOWN OFFICES

Middletown Town Office	302-378-2711
Odessa Town Office	302-378-2510
Townsend Town Office	302-378-8082

FIRE COMPANIES

Volunteer Hose Co. of Middletown	302-378-7799
Odessa Fire Co.	302-378-8929
Townsend Fire Co.	302-378-8111
Port Penn Fire Co.	302-834-7483

POST OFFICES

Middletown	302-378-6241
Odessa	302-378-2047
Townsend	302-378-2592

PUBLIC LIBRARIES

Appoquinimink Public	302-378-5588
Corbit-Calloway Memorial	302-378-8838

EMERGENCIES

Ambulance, Fire, or Police dial

911



AUGUSTINE STATE WILDLIFE
MANAGEMENT AREA
MIDDLETOWN, DELAWARE

Delivering Energy That Makes Life Better.

For more than 160 years, Chesapeake Utilities has been committed to delivering affordable energy, helping families and businesses lower their energy costs while supporting significant economic development for their communities. This commitment drives our forward-thinking investments in energy projects that contribute to a lower-carbon future and has resulted in reductions in emissions from both our operations and our customers.

Learn more at chpkgas.com.

**C
O
N
S
O
L
I
D
A
T
E**
**& S
A
V
E**

EXPERIENCE
freedom
from DEBT



- Pay off debt sooner
- Enjoy one monthly payment
- Reduce the risk of late payments[^]
- Enjoy our Free Financial Wellness Program^{*}



Dover Federal
CREDIT UNION

1075 Silver Lake Blvd., Dover, DE 19904
302-678-8000 | www.doverfcu.com

All loans are subject to approval and are granted based on individual creditworthiness, the ability to repay and credit score. Refinancing of Dover Federal loans may not be available.
[^]Electronic payments may be made by payroll deduction or Automatic Transfer. ^{*}In partnership with GreenPath Financial Wellness. See Credit Union for details.



BUSINESS ASSISTANCE

THE FOLLOWING ORGANIZATIONS CAN HELP YOU START OR EXPAND YOUR BUSINESS:

DELAWARE DIVISION OF SMALL BUSINESS

Web site: www.business.delaware.gov

The Division of Small Business is a service-focused agency committed to helping businesses start and grow in Delaware. From navigating the government process, to connecting with resource organization to obtaining capital, the Division of Small Business is your one stop resource.

DELAWARE SMALL BUSINESS DEVELOPMENT CENTER

Web site: www.delawaresbdc.org

The Small Business Development Centers (DSBDC) will answer your questions about managing a small business and provide information about small business issues. The DSBDC provides information, training, and free one-on-one counseling for small business owners and those interested in starting a business. The SBDC can obtain a market feasibility study for your business. It contains data such as a detailed demographic profile of your market area and a great amount of other information.

DELAWARE MANUFACTURING EXTENSION PARTNERSHIP

Web site: www.demep.org

(DEMPE) is a non-profit resource organization offering affordable, confidential technical and business solutions to the small and medium sized manufacturers of Delaware. DEMEP provides sound technical field agents and consultants who specialize in solving problems that are unique to manufacturers.

SERVICE CORE OF RETIRED EXECUTIVES (SCORE)

Web site: www.score.org/Delaware

SCORE provides one-on-one counseling from retired executive volunteers for small business people thinking about starting a small business and for current business owners. The organization also offers low-cost business skills workshops throughout the state.

SMALL BUSINESS ADMINISTRATION (SBA)

Web site: www.sba.gov

The mission of the U.S. Small Business Administration Delaware District Office is to aid, counsel, assist and advocate the interests of the state's small business community, utilizing various financial, investment, procurement, as well as business development programs and resources.

DELAWARE PROSPERITY PARTNERSHIP

Web site: www.deprosperitypartnership.com

Created in 2017, the Delaware Prosperity Partnership works locally, regionally, nationally and internationally as the state's lead resource to attract, retain and grow businesses; build a stronger entrepreneurial and innovation ecosystem; and to support private employers in identifying, recruiting and developing talent in the state of Delaware.

OFFICE OF SUPPLIER DIVERSITY

Web site: business.delaware.gov/osd/

The Office of Supplier Diversity (OSD) mission is to assist the entire supplier diversity community of minority, women, veteran, service disabled veteran, and individuals with disabilities owned businesses as well as small businesses of a unique size in competing for the provision of commodities, services, and construction to State departments, agencies, authorities, school districts, higher education institutions and all businesses.



The advertisement features a yellow background. On the left, there are three small images of animals: a white dog, a black dog, and a black and white dog. On the right, there is a green logo of a sun with a dog's head in the center. Below the logo, the text reads: "Companion Animal VETERINARY ASSOC.", "Providing Individualized Patient Care In A Fear Free Setting", "Serving The Needs Of Dogs, Cats & Select Exotics", "www.CAVAvet.com", "302-464-1255", and "5360 Summit Bridge Rd., Ste. 2 & 3, Middletown".

TAX ADVANTAGES IN DELAWARE

The State of Delaware has adopted a clear, bipartisan policy to attract new business and encourage the expansion of existing operations. Key tax features, which now make Delaware more competitive, include:

- No State or local general sales tax.
- No personal property or inventory taxes.
- Real property taxes are among the lowest in the country.
- Corporate income tax credits and reduction of gross receipts taxes for new and expanded businesses.
- Additional tax credits on corporate income and reduction of gross receipt taxes for new and expanding businesses locating in 30 targeted census tracts.
- Property tax relief for new construction and improvements of existing property.
- The exemption of certain investment and holding companies from corporate income tax.
- The adherence of the State tax structure to the federal definition of corporate net income so that companies may take full advantage of any federal tax law change, such as more rapid depreciation of newly purchased assets.
- Two approved foreign trade zones will allow the deferment of import taxes.
- Public Utility Tax rebates of 50% on increased consumption for qualifying industries, and reduced rate for manufacturers and agricultural processors.
- Accelerated experience ratings for new employers.





A MESSAGE FROM THE BOARD PRESIDENT

Dear Chamber Community Members,

To say that I am honored to serve as your President of the Middletown Area Chamber of Commerce is an understatement. What a time to be a part of the Middletown – Odessa – Townsend business community! Nowadays it seems like everywhere you look in MOT, we have another business celebrating their hard work and dedication to serve the community. The best part is a vast majority of these businesses coming to town are from here. Their children get their education locally, they shop locally, and they are invested in the very fabric of this tremendous area. In our continued commitment to the MOT area, we made the decision to plant our headquarters almost right in the center of town where we should be. It is here where everyone in the community can better access us. Growth and prosperity have both been synonymous with this area in recent years and MACC plans to keep that alive in 2025. With the addition of our newest board members, and the executive leadership team of both MACC and the MACC Foundation, our current leadership is one of the strongest it has been, and this year you will hear from us more than you ever have as we strive to keep everyone up to date with happenings at the chamber!

With everything we do at MACC, it could not be accomplished without our Chief Executive Officer – Michelle Hummel, who every day is at the helm guiding us with her tireless dedication and work ethic. We also have a fantastic MACC staff, and team of volunteers we call Ambassadors who give more time week after week with the goal of the community's success in mind.

I encourage and welcome your feedback and ideas of how we can add even more value for YOU! Please don't hesitate to reach out to me or any member of our team. I hope to see you at an event soon.

Sincerely,

Joshua Wilson, RFC®
President

"People working together in a strong community with a shared goal and common purpose can make the impossible, possible."
- Tom Vilsack

WE MAKE LOCAL ADVERTISING WORK.



At Viamark Delaware, we consistently maximize brand recognition and growth for our local and regional clients. Why? Because we live here. We know the market because it's our market.

Our unique business model provides results like no other, because Viamark is built like no other advertising agency.

You'll get the attention, wealth of local knowledge, and proven media buying experience of a regional partner, along with the resources, results-driven focus, and needle-moving creative of a national agency.

That's *our* secret weapon. Let us help you find *yours*. Together, we'll craft powerful, needle-moving messaging that gets results.



A locally-owned, results-driven, full-service advertising agency specializing in web design, social media, and IT services.

viamarkdelaware.com • 302-660-2136



Middletown Area Chamber of Commerce Board of Directors



President
Josh Wilson
State Farm

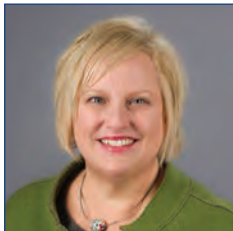
The Middletown Area Chamber of Commerce is dedicated to providing a strong voice for businesses in Southern New Castle County

The Middletown Area Chamber of Commerce is dedicated to promoting business and enhancing the quality of life in the Southern New Castle County area. Chamber members take leading roles in important community and business programs, working to enhance and preserve the special life-style that is unique to Middletown, Odessa, and Townsend (MOT) communities. We are actively involved in fostering economic development and community spirit for the MOT and surrounding areas.

www.maccde.com 302-378-7545



Vice President
Katie Falkowski
Viamark Advertising



Secretary
Kristen Krenzer
Town of Middletown



Treasurer
John Eldridge
Apothic Revenue



Director
Dr. Flaveé Banfield
Advanced Family Care



Director
Dave Detrick
Chesapeake Utilities Corporation



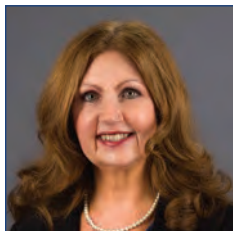
Chairman
Kiel Drake
Fred Drake Automotive



Director
Heather Long
Law Offices of Long & Greenberg



Director
Karolyn Nagel
WSFS



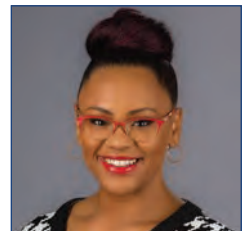
Director
Susan Yocum
Dover Federal Credit Union



Chief Executive Officer
Michelle Hummel
MACC



Office Manager
Chrissy O'Grady
MACC



Member & Engagement
Coordinator
Stephanie Dawkins
MACC

MACC Foundation

MACC FOUNDATION BOARD OF DIRECTORS

The MACC Foundation operates the Middletown Business Incubator (MBI), facilitates education and training seminars through the Middletown Enterprises Career Accelerator (MECA), and hosts events to raise funds for annual scholarships and entrepreneurial grants.



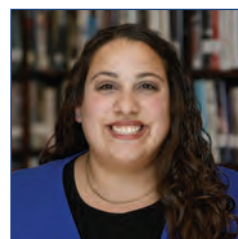
Foundation Chair-
man
Debbie Ament
Apothic Revenue



Foundation
President
Rich Mazzio
Pike Creek Mortgage



Director
Patrick Carson
M&T Bank



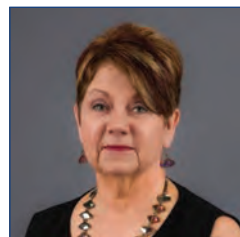
Director
**Katryna Cera-
Proux**
*Corbit Calloway
Memorial Librai*



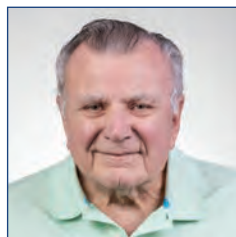
Director
Lyndsay Myers
*Appoquinimink
School District*



Director
Nick Ryan
All Therapy



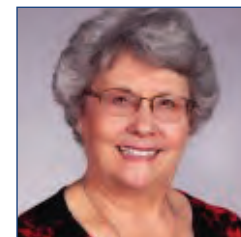
Director
Mary Jamieson
Mary Kay



Director
Bill O'Neal
MOT Senior Center



Director
Sital Soni
ELM Strategies



Director
Carolyn Stanley
Stanley Properties



MBI

Middletown Business Incubator
& Collaborative Workspace

The Middletown Business Incubator (MBI) serves as an enterprise business center that provides resources for businesses and entrepreneurs to grow and be successful.

MISSION: To inspire entrepreneurship through opportunity

VISION: Supporting business and economic growth through entrepreneurship for the MOT (Middletown, Odessa, Townsend) Area

The MBI is unique for our area as it is anchored through the Middletown Area Chamber of Commerce (MACC) and supported through the Middletown Area Chamber of Commerce Foundation, a 501 (c) 3 nonprofit organization dedicated to scholarship, education and economic development. It also offers a collaborative environment for entrepreneurs and existing businesses with a variety of rental space opportunities, in addition to networking, seminars, workshops and mentorship. More information is available at maccde.com/mbi-workspace

MEMBERSHIP BENEFITS

ADVERTISING

Our new online community calendar offers members the chance to share their events, job postings, coupons and more!

ANNUAL DIRECTORY

The nationally award-winning MACC Community Guide & Business Directory is published annual in both print and electronic formats. All member companies receive a listing in the directory with their membership. The directory may be found at the Chamber office, town offices, Smyrna rest stop and businesses throughout the MOT area. It is also handed out at trade shows and expo's throughout the State of Delaware.

CERTIFICATE OF ORIGIN

International business certificate authorization is complimentary for MACC members.

COMMITTEE INVOLVEMENT

A variety of committees have been established by the MACC. Your involvement in a Chamber committee affords you an opportunity to have a direct impact on the welfare of both the Chamber and the community through the prudent use of your areas of interest and expertise. You will help fulfill the Chamber mission of leading and advancing economic development. In addition, you will be supporting the civic and social welfare of the MOT area through advocacy and support of our members and the community.

CONSTANT CONTACT

Online Marketing Tool for e-mail, newsletters, and surveys services available to members. A 60-day free trial and then members receive up to 25% discount. Available even if you are already a Constant Contact subscriber.

INTERACTIVE WEBPAGE

Members receive a free online interactive webpage and advertising opportunities including coupons, promotions, list job postings, add your events and social media too!

MEDICAL BENEFITS

The Chamber offers excellent enhanced medical, dental, vision, health & supplemental insurance benefits. Healthcare benefits include the opportunity to compare plans with various insurance programs.

NETWORKING & BUSINESS MIXERS

MACC Chamber members can attend 75+ free networking mixers each year. Network with area business contacts at our popular Business Mixers. Mixers are a great way to build relationships in the community. No other Middletown area event regularly brings together so many business and community people in one place at one time.

NOTARY PUBLIC SERVICES

Included with membership for all Chamber members and their staff.

REFERRALS

The Chamber receives hundreds of inquiries monthly from businesses and consumers that are referred exclusively to our members. Our website is a great resource that provides the general public with the opportunity to quickly find our Chamber members with the click of a button.

RETIREMENT PLAN OPTIONS

401(K) and retirement options through affiliate partnership with Diamond State Financial.

RIBBON CUTTING SERVICES

Ribbon cutting, red ribbon, press release, and newsletter mention with photo, framed official ribbon cutting certificate including piece of ribbon.

SOCIAL MEDIA

MACC events will be published in all social media vehicles including, Facebook, LinkedIn and Twitter for more advertising exposure for our event hosts and sponsors.

TAX DEDUCTIBLE BUSINESS EXPENSE

Chamber dues and related expenses are a tax-deductible business expense. (Consult your tax preparer)

TRAINING COURSES

Online cost-effective training courses through Coggnos. Human Resources, Leadership, Social Media & more!

WEBSITE

Our enhanced website offers a free online interactive webpage and advertising opportunities for our members. Offer coupons, list job postings, add your events and social media too! Check it out for the latest news and events!

www.maccde.com





2025 Distinguished Partners

Platinum



Gold



Silver



LAW OFFICE OF
Heather A. Long



CANDICE SANTORO
&
CAROLYN STANLEY

COMPASS RE

Foundation Partner



Copper

NETWORKING GROUPS

IN ADDITION TO THE VARIOUS NETWORKING OPPORTUNITIES THROUGHOUT THE YEAR AT VARIOUS CHAMBER MIXERS AND EVENTS, THE MACC IS PROUD TO OFFER ITS MEMBERS TWO NETWORKING GROUPS.



MIDDLETOWN BUSINESS ALLIANCE (MBA)

MISSION: To build our member businesses through mutual referral network marketing. Middletown Business Alliance (MBA) Group currently meets each Tuesday at 8:15 am at the MACC office. Networking is followed by business introductions and a weekly presentation. Each meeting offers an opportunity for exchanges of referrals. Only one business from each industry is accepted into the group, so that each member gets to present to the others in a non-competitive atmosphere.

TOASTMASTERS

MACC Standing Ovation Club meets the 2nd & 4th Mondays of each month for leadership and public speaking personal development!



MOT ROOFING AND CUSTOM CARPENTRY



Expert Craftsmanship
with over 20 years
experience



**CONTACT US FOR
A FREE ESTIMATE!**



302-598-9717

motroofing.com






WAKE UP WITH THE BOBBY BONES SHOW
WEEKDAY MORNINGS 6AM-10AM

ONLINE AT WDSD.COM OR ON THE FREE IHEARTRADIO APP





Find us on 



Corbit-Calloway

MEMORIAL LIBRARY

Literacy & Discovery



Enrichment & the Arts



Community Events



| corbitcalloway.lib.de.us | 302-378-8838 | 115 High St, Odessa, DE 19730 |



A MESSAGE FROM THE MIDDLETOWN MAYOR

The Mayor and Council of Middletown

19 West Green Street, Middletown, Delaware 19709

Kenneth L. Branner, Jr., *Mayor*

Council Members:

Aaron T. Blythe, *Vice-Mayor*

Andrew Chas

Bruce A. Orr

James D. Royston

Craig Sherman

David W. Thomas



Morris Deputy, *Town Manager*

(302) 378-9120 • Fax (302) 378-5672

Kristen Krenzer, *Public Relations*

(302) 378-2711, x2223 • Fax (302) 378-9172

Rae Yingling, *Administrative Assistant*

(302) 378-5670 • Fax (302) 378-5672

Hello, and welcome to the Town of Middletown!

I am pleased to report that going into 2025, the Town of Middletown is continuing to thrive, keeping up our reputation as “the” place to live, work and play! In fact, for the second year in a row, Fortune.com named Middletown in its “50 Best Places for Families to Live 2024.” We are proud to be #23 out of all of the Towns in the United States!

I believe our strong partnerships with all of those who do business in the Town, including the Middletown Area Chamber of Commerce, surely make us stand out in the crowd.

Hobby Lobby and PetSmart will be joined by restaurants First Watch and Honeygrow in the shopping center surrounding Target. We have a couple of neighborhoods in the southwest portion of Town that should be starting construction in 2025, along with several new restaurant and commercial spaces adjacent to the US 301 exit ramps at Levels Road. Keep your eyes out for the future expansion of the Christiana Hospital Middletown Campus, which should be starting very soon.

And, just approved by Town Council in January, Middletown will soon be home to an extra-large distribution center that will offer many job opportunities in this area.

And, as has been the case for several years now, I’m sure there will be more surprises to announce very soon.

We are excited to see our vibrant town continuing to grow and change, yet we are happy to have been able to maintain our “small town” charm and welcoming atmosphere. As always, don’t hesitate to contact me or anyone on Town Council if you have questions or concerns.

Sincerely,

Kenneth L. Branner, Jr., Mayor





Follow Us on Social Media



Middletown Area Chamber of Commerce



@middletownareachambercommerce



Middletown Area Chamber of Commerce | MACC Foundation
 Middletown Business Incubator & Collaborative Workspace
 Phone: 302.378.7545 | Fax: 302.378.6260
 651 N. Broad Street, Suite 306, Middletown, DE 19709
www.maccde.com



MIDDLETOWN

A Short History

Middletown, Delaware, located about 24 miles south of Wilmington, is an early crossroads town, one of the old Delaware towns not on a navigable waterway. Although Middletown is mid-way between Dover and Wilmington, the town received its name in the early 18th century because it was located halfway between a trade route known as the “Herman’s Cart Road.” This road extended from the Bohemia River (a tributary of the Chesapeake Bay) to the village of Cantwell’s Bridge (now Odessa), situated on the Appoquinimink Creek, which flows into the lower Delaware River. This was the shortest route from the Atlantic Ocean to the Chesapeake Bay before the construction of the Chesapeake and Delaware Canal in 1829.

Of course, Native Americans inhabited the Middletown-Odessa-Townsend area for many centuries before the arrival of Europeans. Called the Lenni-Lenape, they were an important branch of the Algonquin tribe. The Algonquins called them “grandfathers” and newly arrived Europeans called them “Delaware Indians.” Translated into English, the words Lenni-Lenape means “real-men.” Native American hunting and fishing parties made use of a trail which begins at Summit Bridge and runs southwest toward Coldwells

WWI Monument on Cochran Square, erected 1919.



Corner (The Choptank-Bunker Hill Road). As more and more Europeans arrived in the area, it soon made this part of the country uninhabitable for the Lenapes. By the mid-eighteenth century, the Lenapes started an exodus westward which was to end in their virtual extinction as an organized tribe.

On March 4, 1675, a Swede named Adam Peterson took out a warrant to purchase 200 acres of land. Later he amassed 1,024 acres. Middletown is situated on a portion of that land he purchased. His son’s widow married David Witherspoon, a native of Londonderry, Ireland, and they settled upon the King’s Highway at the crossroads, first known as Mrs. Blackston’s Corner. In 1761, David Witherspoon built a “public house” which was to become popular in Middletown as a stop over for travelers along the Upper King’s Road. Scotch-Irish, and Dutch families settled this area and a farming community arose and began to prosper. Portions of the tavern remain within the walls of the present Witherspoon Tavern building, located in the center of town, which was heavily damaged in a Valentine’s Day fire in 1946. The cornerstone is still in the original part of the building. During the Revolutionary War, there were many patriots from the Middletown area who joined the cause for Liberty and Independence. At one time during the campaign, the Delaware Continentals, under the command of Caesar Rodney, encamped at the Noxontown Mill, the exact spot being marked for today’s visitors to that area. Notables of the Revolutionary period such as George Washington and Thomas Jefferson stopped at the Witherspoon for rest and refreshment.

Following the Revolution and the establishment of the original 13 states, Middletown returned to the ways of a farming community. By this time, Middletown had become an important town in the state as a trading center and an agricultural area. The rich soil was abundant in wheat and corn, and trading in the town flourished.

In 1799, Middletown was described as, “A little village of about 120 inhabitants which lies on the arm of the Appoquinimink and here turns several mills. The people are Presbyterians. A stage coach goes three times a week from Philadelphia by way of Wilmington and

Reunion of Civil War troops about 1890





The Witherspoon Inn (1761) now is home to Sully's Irish Pub.

Middletown to Warwick and Chestertown, Maryland returning by the same route; and there is a stage coach from the landing point on Appoquinimink Creek to that on Bohemia Creek."

Middletown was incorporated on February 12, 1861. The first Council decided the Town should be one mile square, commencing at the center of the crossroads and extending half a mile in each direction. Thus it was known as the "Diamond

Town of the Diamond State." As the Town has grown, its boundaries have extended in each direction, and schools were erected. The most famous is the Middletown Academy, built in 1826, and used as a private school until 1876. This building today is perhaps the most revered in town. It is now owned by the Middletown Mayor and Council and is currently the home of the Middletown Historical Society and Middletown Main Street.

With the arrival of the railroad in 1855, Middletown entered into a new era of growth. Local farmers found prosperity in the peach industry that flourished in the area between 1850 and 1875. With the completion of the railroad, peaches became the chief crop in the area. The peach industry continued to grow until 1875, the year of the biggest crop. Peaches were shipped from the Middletown area during that season an average of 35 railroad car loads daily, 530 baskets to each car, making a total of 1,500,000 baskets in that year. Unfortunately, the trees were not exempt from disease, and a fatal malady called "peach yellows" infested the crop during the latter quarter of the century and gradually brought about the complete abandonment of peach growing. Large, Italianate "peach mansions" can still be seen north and west of town.

In 1868, Delaware's oldest consecutively published newspaper, the Middletown Transcript, opened its doors here, as did the Middletown

WWI Memorial on Cochran Square, Delaware's first WWI monument.



Opera House. In 1886, Middletown became one of the first towns in Delaware to install electric street lights. The following year, local firefighters organized the Volunteer Hose Company, and a system of fire hydrants was begun. Water was supplied by a water stack, which still stands on East Lake Street.



Old Academy is now home to the Middletown Historical Society & Middletown Main Street

Middletown has the distinction of being the first town in the State to erect a monument to those who died in World War I, located in the center of town at Cochran square. This bronzed shaft is 18 feet high with an ornamental base, resting on a granite block five feet square, dedicated to the soldiers from this area who lost their lives during World War I. Today it honors all war heroes.

Today, Middletown continues to flourish and prosper, and its boundaries have nearly tripled in size. Now known as one of the fastest growing regions in the state, Middletown offers new and exciting residential communities and an ever-increasing number of employment and shopping opportunities.

The Town Hall and Opera House before the disastrous fire which completely levelled the building in 1918.



ODESSA+TOWNSEND

A Short History

Odessa is known as the town with three names in three centuries. Appoquinimie was the original Indian name of the town. It was changed to Cantwell's Bridge in 1731, named for the man who had the toll bridge over the Appoquinimink Creek. In 1855 the town officials changed the name to Odessa, named for the prominent Ukrainian wheat and produce shipping port, with the hope that Odessa, Delaware would flourish, as did its Russian namesake.

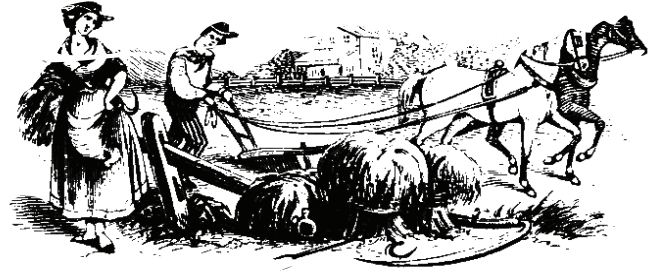
The town's long history dates back to the Dutch and the Swedes in the 17th century. Aside from a few old family names, no trace of these settlers remain. The south side of Main Street was populated first. Then in 1821, the north side of Main Street, which had been farm land, was laid out in lots. The Brick Hotel (c.1822) was the first building constructed. The Log & Frame House (c.1740), The Starr-Lore House (c.1775) and The Enos House (c.1845) are partially of plank and log construction.

Exhaustion of the soil on nearby farms seems to have slowed down commercial activity and building until about 1835 when commercial fertilizers and the laying-out of peach orchards revived the area. Many fine wooden houses in the late Federal style on Main Street and High Street attest to the return of good times. Real wealth came to the community in the 1850's when the Old Methodist church, the Cyrus Polk House, and other handsome residences were built.

Historically, Odessa was one of the important trading ports on the Delaware River until the 1890's when a viral disease, "the yellows," destroyed peach crops, diminishing exports. The railroad, having been placed three miles to the west in Middletown (c.1855), also hastened the decline of the port. Though much smaller than New Castle, Odessa possesses one of the finest collections of late 18th- and early 19th-century architecture in the middle-Atlantic region. The center of town is now on the National Register of Historic Places, and local authorities have zoned the entire town as historic.

The buildings in Odessa cover a period of over two hundred years with fine examples of Colonial, Mid-Georgian, Federal and Victorian architecture. In 1938, Rodney Sharp purchased and started the restoration of the Corbit House, today known as the Corbit-Sharp

In the 1800's, Iron Steamers regularly traveled between Philadelphia and Odessa.



House. It is one of the best-documented houses in America—from the date of its erection to its cost—and even some of the names of the craftsmen and workmen. Today it is owned by Historic Odessa Foundation.

In 1968 Mrs. J.C. Calloway provided a modern brick building on High Street to house the oldest free public library in the state of Delaware. In his will dated 1847, Dr. James Corbit provided for the establishment of the library with a bequest of his library, two railroad bonds, and a Pennsylvania State Bond. Today the library is known as The Corbit-Calloway Memorial Library and is a contractual library with the New Castle County Library System. In 1997 it celebrated 150 years of continual service to the M.O.T area.

Townsend, Delaware, Townsend, known for its broad streets and comfortable homes, is the youngest of the three towns of Middletown-Odessa-Townsend area.

Before the 1850's the site was merely a cluster of cabins known as Charlie Town; named after one of the more important residents of the day.

Samuel Townsend, a man in his thirties, had begun to buy farms in the area in the early 1850's; and one Levi Lattomus had established a store. Mr. Townsend donated land from his adjoining farms in the 1860's for the expanding area. This included a plot for a "little red school house" built in the 1860's. The town was named after Samuel Townsend during this period. It was at this time that the tracks of the Delaware Railroad Co. reached the growing community and a depot was constructed.

Records show that the town was incorporated on April 3, 1885 with a population of 350 and re-incorporated in 1905. Peaches and grain in large quantities were staple exports of Townsend. Around 1886, George M. D. Hart operated a peach dryer, employing 100 people and processing 800 baskets a day during the busy season.

Despite the ending of the peach prosperity after the 1800's, the population continued to grow. In addition to the Delaware Railroad, which passed through the town, the Queen Ann and Kent Railroad ended there, making Townsend a bustling railroad center.

Businesses continued to open and thrive at the end of the nineteenth century and into the twentieth. The town boasted two car dealerships after World War I. Mr. James A. Hart sold Fords and Mr. W. Harmon Reynolds sold Studebaker automobiles. Townsend had a lumberyard operated by the Maloney family and later by the Hart & Beardsley families.

A cannery and a creamery were busy sites in the town. Mr. Shockley was the town watchmaker and Mr. Evan Moffitt was the print shop operator in the 1920's.

Mr. John Guessford ran the barbershop for 75 years beginning in 1912. Mr. S.A. Collins and later Mr. G. Lester Daniels were undertakers.

In the fall of 1925, the worst fire in the history of Townsend began at the J. E. Dickerson hotel located on Main Street and Railroad Avenue. High winds fanned the blaze in the large three-story structure and sent embers onto the wooden roofs on nearby homes. Since there was no fire company in the town, engines were called from nearby communities. They were limited in their use because no water system existed in the town at that time. At the height of the blaze, a large Pennsylvania Railroad Steam Engine approached from the north. The steam engine was immediately commandeered by the residents and firemen for the use of several hundred gallons of water it contained to make steam. The engine made numerous high-speed trips to Middletown to refill its tank. These actions were credited with saving a large portion of Townsend from ruin.

Almost immediately after this fire, plans began to take shape for a fire company and water system in the town. Funds were raised and equipment purchased and by 1927 the systems were up and running. Today, the fire company remains a very important part of the community and a center for activity in the area.

Immanuel United Methodist Church in Townsend was organized in 1871 and consisted of a small frame building near the site of the present church. In 1900, a beautiful brick church was constructed with its impressive stained glass windows and continues to be the architectural focus of the town.



GENERAL CONTRACTORS
DAVID A.
BRAMBLE
INC
CHESTERTOWN, MD

www.davidabrambleinc.com

<p>Site Contractor</p> <ul style="list-style-type: none"> • Hot Mix Asphalt Paving • Stormdrain, Water, and Sewer • Mass Excavation • Site Grading 	<p>Retail Sales</p> <ul style="list-style-type: none"> • Hot Mix Asphalt • Recycled Materials • Sand, Gravel, and Topsoil • Roll Off Dumpster Service
<p>Office Locations:</p> <p>Home Office Servicing Upper Shore 705 Morgnac Rd Chestertown, MD 410-778-3023</p> <p>Salisbury Office: Servicing Lower Shore 28101 Old Eden Rd Eden, MD 410-742-8484</p>	<p>Hot Mix Plant Locations:</p> <p>Wye Mills Plant Wye Mills, MD 410-758-3677</p> <p>Massey Plant Conveniently located 13 miles south of Middletown, DE Massey, MD 410-928-3870</p>





WE'RE HERE TO GET YOU THERE

Where you are now won't be where you stay. At Shore United Bank, we're here to support you on your next steps toward something you really want to do. Whatever that is, you can tell us. Because when you have a banking partner who cares about your needs and your success, getting there becomes a matter of when, not if. We make things happen - for our community and for you. So let's get you there.



Commercial Lending Office • 302-449-6320
102 Sleepy Hollow Drive, Suite 204, Middletown, DE

ShoreUnitedBank.com | 877-758-1600 | MD. DE. VA | MEMBER FDIC |    



A MESSAGE FROM THE ODESSA MAYOR

Town of Odessa

*315 Main Street
P. O. Box 111
Odessa, DE 19730*

Welcome to Historic Odessa:

The town of Odessa has 366 residents. This small, but historic, town is located near Delaware Route 1 and is a very easy drive from upper New Castle County or the state capital of Dover.

We have eighty historic buildings, some of which are opened to the public, under the direction of the Historic Houses of Odessa.

Along Main Street you will find the police station, town hall, fire station, post office, church, antique shop, and a restaurant, along with many historic properties. The Corbit-Calloway library and two bed and breakfast facilities are located on High Street.

Each year the Historic Houses of Odessa host a brew fest in September, and on the first Saturday in December, the Women's Club sponsors Christmas in Odessa with tours of local homes and public buildings, a craft show, luncheon, and other local activities. Our library has a May Fair on High Street, and breakfast with Santa is held in December at the Odessa Fire Company. These are just a few of the activities in this active town.

Walking on Main Street and High Street, you return to the 18th and 19th centuries with the brick sidewalks and historic buildings, many with white picket fences.

Odessa is a welcoming town to visit or live in. You can go to the town website – odessa.delaware.gov – to find other valuable information.

Sincerely,



Harvey C. Smith, Jr.
Mayor of Odessa

Phone: (302) 378-2510 FAX: (302) 378-8292
Email: townofodessa@gmail.com
Web-Site: odessa.delaware.gov





SAVANT

WEALTH MANAGEMENT



SAVANT

TAX & CONSULTING

Main Street, *not Wall Street*

At Savant, our team combines Wall Street knowledge with Main Street values to help you pursue your financial goals. Savant is a nationally recognized fee-only firm that offers integrative investment management, financial planning solutions, and tax advisory and preparation to individuals, families, and organizations.

Call for a complimentary consultation today!

TAX ADVISORY | PLANNING | PREPARATION | ACCOUNTING | BUSINESS CONSULTING

Dover: **302-734-5826**

Lewes: **302-644-6850**

Middletown: **302-378-4644**

savantwealth.com

SAVANT



Savant Wealth Management ("Savant") is an SEC registered investment adviser headquartered in Rockford, Illinois. Past performance may not be indicative of future results. A copy of our current written disclosure Brochure discussing our advisory services and fees is available upon request or at www.savantwealth.com. The scope of the services to be provided depends upon the needs of the client and the terms of the engagement.

MIDDLETOWN GOVERNMENT

Middletown's government consists of seven elected officials: a mayor and six council members. The mayor and three council members are elected for two-year terms during odd numbered years. The following year, the other three council seats are elected. Elections are held the first Monday in March. To be eligible to vote, you must be at least 18 years old and provide proof of residency in the Town of Middletown. The Mayor and Council meet the first Monday of each month at 7:30 p.m. in the council chambers of Town Hall, 19 W. Green Street.



Mayor
Kenneth L. Branner



Vice Mayor
Aaron Blythe



Councilman
Drew Chas



Councilman
Dave Thomas



Councilman
Bruce Orr



Councilman
Craig Sherman



Councilman
James D. Royston

PLANNING AND ZONING COMMISSION

The Planning Commission is appointed by the mayor with the consent of council and consists of 9 town residents and the Fire Chief. The commission reviews proposed amendments to the town's zoning ordinances and other zoning changes, and makes recommendations to council. Additionally, the commission is charged with reviewing the comprehensive plan, and makes recommendations to council for revisions. Planning Commission meetings are held the third Thursday of the month at 7 p.m. in council chambers of Town Hall, 19 W. Green Street.

BOARD OF ADJUSTMENT

The Board of Adjustment is appointed by the mayor with the consent of council and consists of five town residents. The board is responsible for granting or denying variances, special exceptions and zoning appeals. Board of Adjustment meetings are held as needed in council chambers of Town Hall, 19 W. Green Street.

BUILDING CODE ENFORCEMENT

The Town of Middletown is responsible for inspecting all new residential and commercial construction and renovations to ensure code compliance. It also inspects existing properties to ensure compliance with the housing code and to maintain healthy, sanitary and safe living conditions.



PERMITS, TAXES + UTILITIES

RESIDENTIAL BUILDING PERMITS

If you are planning a home improvement project, contact the Middletown Building Permit Office, located at Town Hall, 19 W. Green St., Middletown, or call (302) 378-1171. Building permits are required for:

1. Building or installing decks, patio covers, garages; ventilation, heating or air-conditioning supply or exhaust systems; swimming pools; and tool or storage sheds.
2. Additions, dormers, enclosing an existing porch, converting a garage to a livable area, finishing a basement or basement egress.
3. Replacing roofing, windows or siding.
4. Demolishing any structure or part of a structure affecting a building on your property.
5. A building permit ensures that work is done in compliance with the International Building Code and the Code of the Town of Middletown and ensures that each phase of work is inspected by the town's code official. Contractors hired to perform building or reconstruction work must be licensed with the town.

Contact the office for information about Commercial Permits at (302) 378-1171.

COMPLAINTS DEPARTMENT

The code officials also enforce town ordinances prohibiting substandard housing conditions, high weeds and nuisance conditions. The officials investigate property maintenance complaints.

To register a property maintenance complaint in the Town of Middletown, call (302) 378-1171.

RENTAL INSPECTIONS

Each non-occupant owner of a residence who rents or leases to another person is required to have the property inspected prior to occupancy. This also applies to each tenant exchange at a given property.

Call (302) 378-1171 to register your rental property.

HISTORIC DISTRICT ZONING

Following guidelines established by the National Trust for Historic Preservation, special regulations and guidelines have been created for properties located within the Middletown Historic District, which comprises much of the center of town and adjacent streets. Contact the code enforcement department for details.

BUSINESS LICENSE

No person shall conduct or engage in any trade, business or occupation with the Town of Middletown without first having obtained a business license issued by the Town of Middletown and paid the license fee prescribed. Application for business licenses can be obtained at Town Hall, 19 W. Green St., Middletown.

For more information, call (302) 378-1171 or visit

www.middletown.delaware.gov

TAXES & UTILITIES

Call the Town Office (378-2711) for details.

ELECTRIC

Middletown - supplied by DEMEC, distributed by the Town
Odessa & Townsend - supplied directly by Delmarva Power

WATER

Middletown - supplied by Town of Middletown and
Artesian Water Company
Odessa - private wells
Townsend - supplied by Artesian Water

SEWERS

Middletown - provided and maintained by the Town
Odessa and Townsend sewer service is provided by New Castle County

GARBAGE

Middletown - contracted with outside firm
Odessa - contracted with outside firm
Townsend - contracted with outside firm

NATURAL GAS

Middletown and Odessa - supplied and distributed by
Chesapeake Utilities Corp.

TELEPHONE SERVICE PROVIDERS

Verizon 800-942-5000
Breezeline 855-706-1501

TAXES

STATE OF DELAWARE

Web site: www.state.de.us/revenue

For information call 1-302-744-1085.

Sales - There is no state retail sales tax.

Income - Based on a sliding scale from 2.2% to 6.6% according to wages

Corporate Income - 8.7%

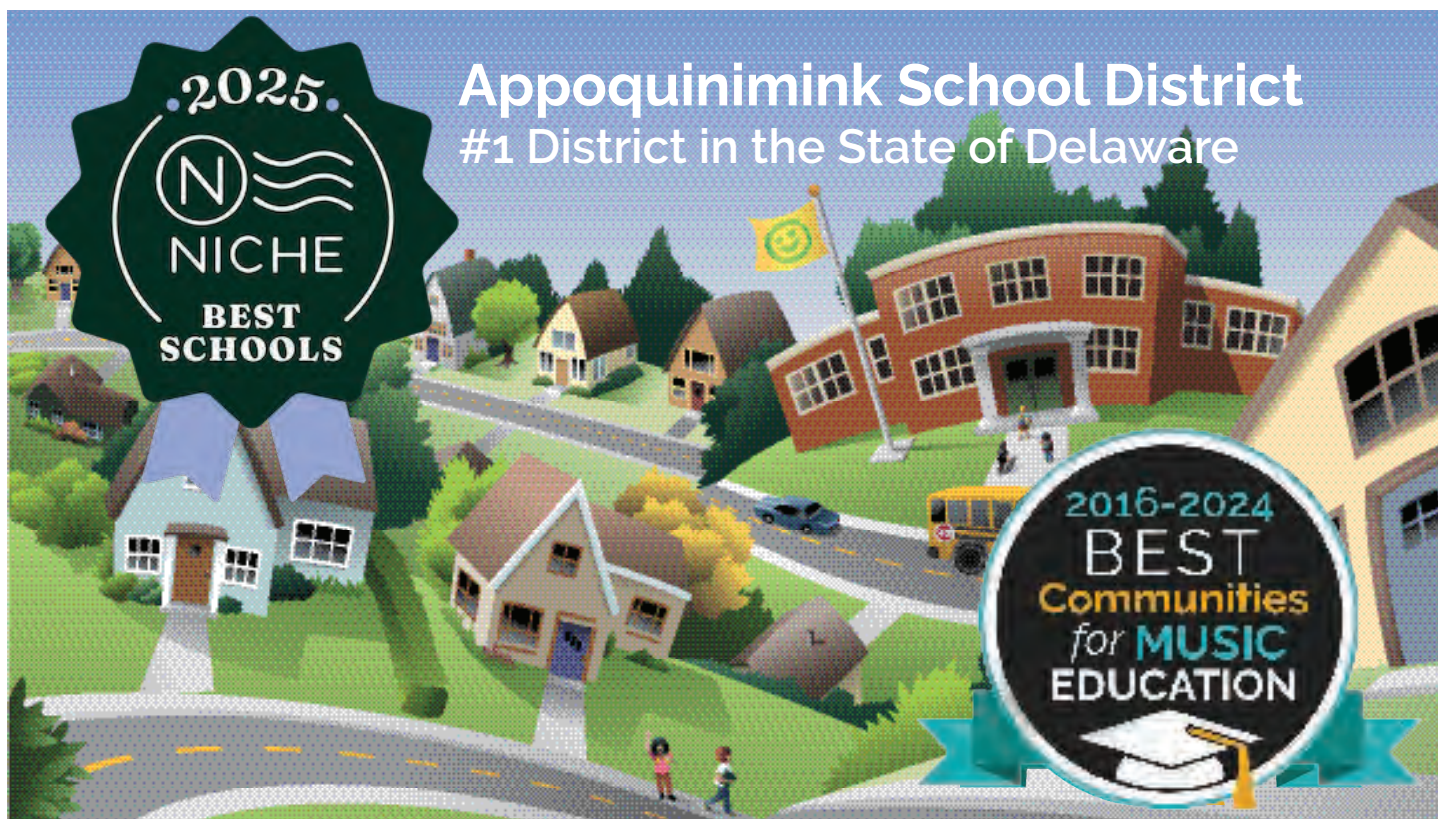
(contact the State Tax Dept. at 1-302-577-8783 for more info.)

NEW CASTLE COUNTY

Web site: www.nccde.org

For information call (302) 395-5555.





Appoquinimink School District

THE WORLD IS OUR CAMPUS

ADMINISTRATIVE OFFICES

313 South Fifth Street, PO 4010
Odessa, DE 19730-4010
www.apposchooldistrict.com
(302) 376-4128 p

ALFRED G. WATERS MIDDLE

1235 Cedar Lane Road
Middletown, DE 19709
www.agwaters.org
(302) 449-3490 p

ADULT CONTINUING EDUCATION PROGRAM

120 Silver Lake Road
Middletown, DE 19709
(302) 378-5037 p

APPOQUINIMINK HIGH

1080 Bunker Hill Road
Middletown, DE 19709
www.appohigh.org
(302) 449-3840 p

APPOQUINIMINK PRESCHOOL CENTER

502 South Broad Street
Middletown, DE 19709
www.appopreschool.org
(302) 376-4400 p

BRICK MILL EARLY CHILDHOOD CENTER

360 Brick Mill Road
Middletown, DE 19709
www.brickmillecc.org
(302) 376-4430 p

BRICK MILL ELEMENTARY

378 Brick Mill Road
Middletown, DE 19709
www.brickmilledolphins.org
(302) 378-5288 p

BUNKER HILL ELEMENTARY

1070 Bunker Hill Road
Middletown, DE 19709
www.bunkerhillelem.org
(302) 378-5135 p

CANTWELL'S BRIDGE MIDDLE

550 Tony Marchio Drive
Townsend, DE 19734
www.cantwellsbridge.org
(302) 842-2585 p

CEDAR LANE EARLY CHILDHOOD CENTER

1221 Cedar Lane Road
Middletown, DE 19709
www.clecc.org
(302) 449-5873 p

CEDAR LANE ELEMENTARY

1259 Cedar Lane Road
Middletown, DE 19709
www.cedarlaneschool.org
378-5045 p

CRYSTAL RUN ELEMENTARY

1470 Aviator Way
Middletown, DE 19709
www.crystalrunelementary.org
(302) 842-2650 p

EVERETT MEREDITH MIDDLE

504 South Broad Street
Middletown, DE 19709
www.meredithmiddle.org
(302) 378-5001 p

LOREWOOD GROVE ELEMENTARY

820 Mapleton Avenue
Middletown, DE 19709
www.lorewoodgrove.org
(302) 842-2575 p

LOUIS L. REDDING MIDDLE

201 New Street
Middletown, DE 19709
www.reddingms.org
(302) 378-5030 p

MIDDLETOWN HIGH

120 Silver Lake Road
Middletown, DE 19709
www.middletownhs.org
(302) 376-4141 p

ODESSA HIGH

570 Tony Marchio Drive
Townsend, DE 19734
www.odessahs.org
(302) 842-2625 p

OLD STATE ELEMENTARY

580 Tony Marchio Drive
Townsend, DE 19734
www.oldstateelementary.org
(302) 378-6720 p

OLIVE B. LOSS ELEMENTARY

200 Brennan Boulevard
Bear, DE 19701
www.olivebloss.org
(302) 832-1343 p

SILVER LAKE ELEMENTARY

200 East Cochran Street
Middletown, DE 19709
www.sleschool.org
(302) 378-5023 p

SPRING MEADOW EARLY CHILDHOOD CENTER

611 Campus Drive
Townsend, DE 19734
www.springmeadowecc.org
(302) 378-6760 p

TOWNSEND EARLY CHILDHOOD CENTER

10 Brook Ramble Lane
Townsend, DE 19734
www.townsendecc.org
(302) 378-9960 p

TOWNSEND ELEMENTARY

126 Main Street
Townsend, DE 19734
www.townsendelem.org
(302) 378-5020 p

Moments by Bella Monroe, LLC

*Your one stop
shop for all
events.*



Planning a special event? Whether it's a corporate gathering, wedding or birthday, we ensure a memorable experience by managing all details so you can relax and enjoy the celebration. We are licensed, insured and serve-safe certified. We are proud to be the 2025 MACC Event and Decor Distinguished Partner!

Services Include:

- ✓ Event Planning and Decorating
- ✓ Full Service Bakery
- ✓ Balloons and Event Rentals
- ✓ Corporate Events & Weddings



www.momentsbybellamonroe.com
www.cloudixballoonbar.com



600 N. Broad Street
Middletown, Delaware



M.O.T. Your Community Realtor



What's Your Home Value?

Call/Text 302-688-SOLD  **meganaitkenteam**
Keller Williams Realty

AMA
ASSET MANAGEMENT ALLIANCE
Property Management & Maintenance

YOUR PROPERTY. OUR PRIORITY.

Closing the gap between property ownership and operation. We are your local property management partner.

We take pride in offering services that adapt to various levels of third-party assistance - from routine or necessary maintenance visits to full-service property management support. With over 30 years of professional experience in maintenance and vendor management, our team brings unparalleled insight and application to each property, leveraging both in-house talent and local resources.

 Call Us **302-655-2100**  Visit Our Website www.assetmanagementalliance.com

 **ARTISANS' BANK**
www.ArtisansBank.com | 302.658.6881



TOGETHER, we build partnerships that last a lifetime.

Let's Talk!

    MEMBER **FDIC** NMLS # **774924**

 **ALL THERAPY**
Physical Therapy & Wellness

Movement is freedom™

**ORTHOPAEDIC INJURIES
DANCE & SPORTS INJURIES
INJURY PREVENTION EDUCATION**

Accepting New Patients • Comprehensive Evaluations
Most Insurance Accepted
Servicing ALL Age Groups • Flexible Hours
Same Day Appointments • Free On-Site Parking
Free Transportation

 101 North Broad Street,
Middletown, DE 19709
Phone: (302) 376-5578
Fax: (302) 376-5580
contactus@alltherapy.net
www.alltherapy.net



MIDDLETOWN/ODESSA/TOWNSEND NUMBERS + SCHEDULES

TOWN OF MIDDLETOWN IMPORTANT NUMBERS

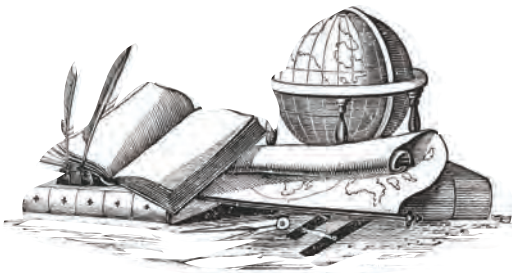
Mayor's Office	302-378-5670
Town Manager's Office	302-378-9120
Business Office/Billing	302-378-2711
Financial Manager	302-378-2711
Public Works	302-378-2211
Emergency (24-hours)	302-378-2211
Electric Foreman	302-378-5143
Water & Sewer Foreman	302-449-2147
Street Foreman	302-378-5140
Code Official & Permits	302-378-1171
Business Licenses	302-378-1171

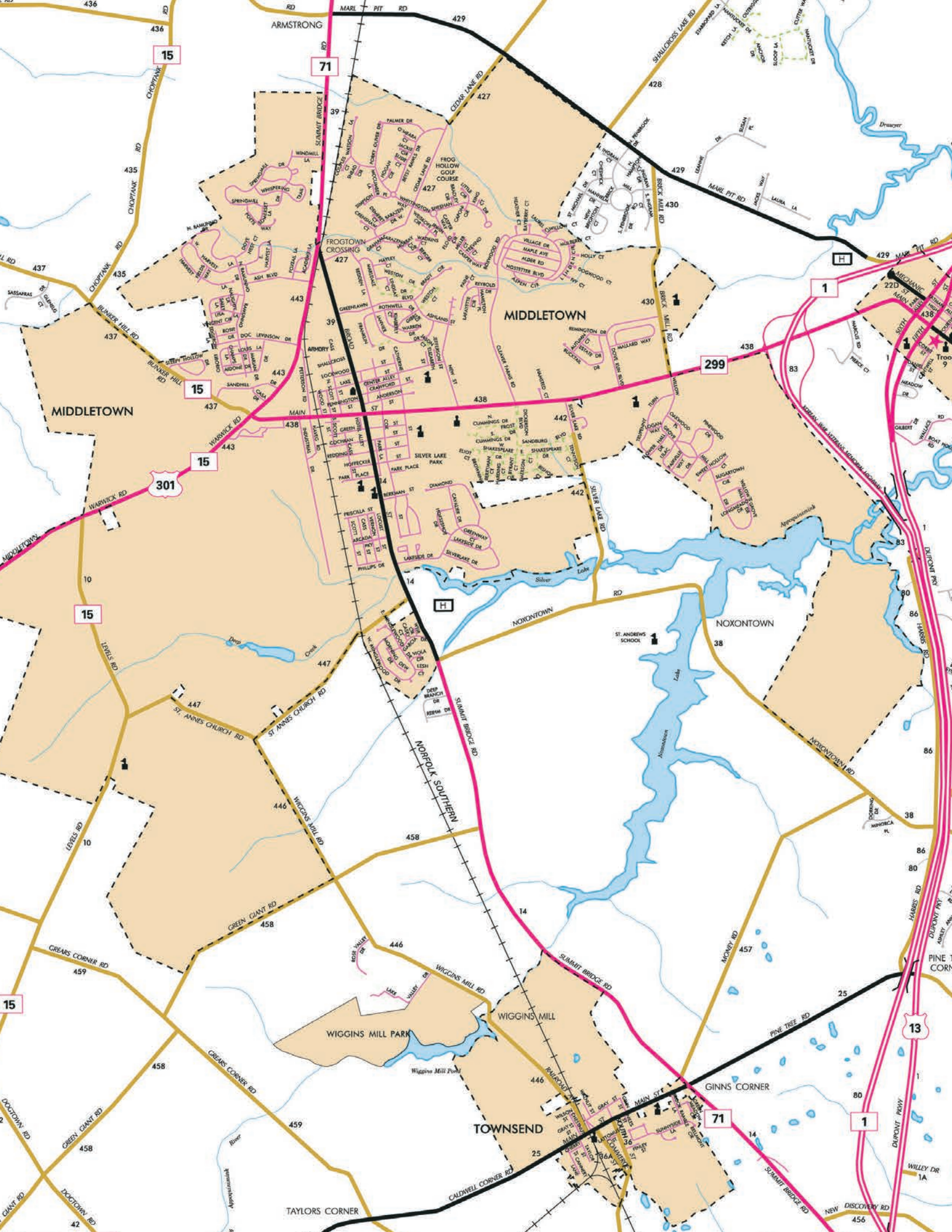
M.O.T. AREA TOWN MEETING SCHEDULES

Middletown Mayor Council Meetings are the first Monday of every month, beginning at 7:30 p.m., in the Town Hall, located at 19 W. Green Street, Middletown, DE. To make special arrangements for seating, call 378-2711.

Townsend Council Meetings are held on the first Wednesday of each month at 7:30 p.m. in the Town Hall, 141 Main Street. Odessa Council meetings are held on the first Monday of each month at 7 p.m. in the Old Academy Building.

School Board meetings are held the second Tuesday of each month at 7 p.m. at the Training Center, 118 South 6th St., Odessa







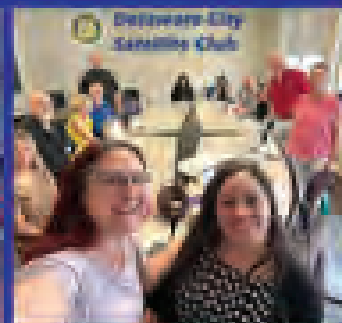
MOT
Rotary
Club of Middletown Odessa
Townsend



Looking for meaningful ways to give back
& make a difference in your community?

JOIN
MOT Rotary Club
or our
Delaware City Satelite Club!

Dedicated to serving our community through
impactful volunteer projects and fostering
connections with like-minded individuals.



MOT Rotary Club &
Delaware City Rotary Club



www.MOTRotary.org



Middletown Business Incubator & Collaborative Workspace

- Mailbox / Business Mailing
- Address Event Space Rentals
- Conference Room Rentals
- Printing Services
- Private Office Space
- Drop In Professional Space

The Business incubator is located in a 5,600 square foot facility designed to accommodate approximately 18 to 25 businesses and provide as a business center for our Chamber community.



The Middletown Business Incubator (MBI) serves as an enterprise business center that provides resources for businesses and entrepreneurs to grow and be successful.

MISSION: To inspire entrepreneurship through opportunity
VISION: Supporting business and economic growth through entrepreneurship for the MOT (Middletown, Odessa, Townsend) Area

The MBI is unique for our area as it is anchored through the Middletown Area Chamber of Commerce (MACC) and supported through the Middletown Area Chamber of Commerce Foundation, a 501 (c) 3 nonprofit organization dedicated to scholarship, education and economic development. It also offers a collaborative environment for entrepreneurs and existing businesses with a variety of rental space opportunities, in addition to networking, seminars, workshops and mentorship.



MBI BUSINESS DIRECTORY

Apothic Revenue	Viamark Advertising
ACM Cleanroom Services	Stanley Properties
MOT Roofing, LLC	Reliable Financial Solutions, LLC
PHOENIX REAL ESTATE	HANZ ON CPR
Delaware Valley Medigap	Toastmasters - Standing Ovation Club
Activ Pest Solutions	Griswold Home Care
Titan Legacy Group	M.O.T. Rotary Club
Middletown Area Chamber of Commerce	

**Located inside the
 NEW CHAMBER OFFICE
 651 N. Broad St., Middletown**





COMPASS RE
 

CANDICE SANTORO
 &
 CAROLYN STANLEY

WE ARE HERE FOR ALL YOUR NEEDS.



☒ Buying a Home

☒ Selling a Home

☒ Renting

☒ Maintenance

☒ Investing

☒ Support

☒ Building Permits

☒ Home Watch
 ...while you're away

Interested in learning about our services?
 Give us a call to learn more!

Candice Santoro
 ☎ 302-584-3279
 ✉ candice.santoro@compass.com

Carolyn Stanley
 ☎ 302-218-8013
 ✉ stanleyproperties@verizon.net



ODESSA, TOWNSEND + NEW CASTLE COUNTY

ODESSA TOWN COUNCIL



Mayor
Harvey C. Smith, Jr.



Councilman
John Freeman



Councilwoman
Yeni Ocampo



Councilman
Leonard Aguilar



Councilman
Lionel L. Hynson, Sr.



Treasurer
David E. Sheats, Jr.

Odessa's Government has five council members. The Mayor, two council members and the treasurer are elected for two-year terms during odd-numbered years. On even-numbered years, the other two council seats are filled. Each year the town clerk and town secretary are appointed. Both town clerk and secretary are paid positions. Odessa Town Council meets the first Monday of each month at 7p.m. The meeting location is The Old Academy Building at 315 Main Street in Odessa. (302)- 378-2510

ODESSA FIRE COMPANY

P.O. Box 81, Odessa, Delaware 19709, 302-378-8929

TOWN OF ODESSA COUNCIL MEMBERS

Mayor	Harvey C. Smith, Jr.
Councilman	John Freeman
Councilwoman	Yeni Ocampo
Councilman	Leonard Aguilar
Councilman	Lionel L. Hynson, Sr.
Treasurer	David E. Sheats, Jr.
Town Secretary	Amy Marie Ottinger
Town Clerk	Amy Chillas Taylor

TOWNSEND TOWN COUNCIL

Townsend's government has five elected officials. Terms are two years, electing three council seats in odd-numbered years and the two remaining seats the following year. Council Mayor is elected from the pool of the five council members, by the members. The Townsend council meets the first Wednesday of each month at Town Hall in Townsend at 7:00 p.m. Virtual and in-person attendance is welcomed!

TOWNSEND FIRE COMPANY

P.O. Box 1, 107 E. Main Street, Townsend, Delaware 19734
Phone: 302-378-8111 Fax: 302-378-9201

TOWN OF TOWNSEND COUNCIL MEMBERS

Mayor	Scott Lobdell (2024-2026)
Councilman	Dylan K. Wiggins (2024-2026)
Councilman	Matthew Chapman (2023-2025)
Councilman	Marcus Suhr (2023- 2025)
Councilman	Dr. Joseph Bangura (2023- 2025)

Town Manager: Julie Goodyear

jgoodyear@townsend.delaware.gov

Town Clerk: Kelsey Gallagher

kgallagher@townsend.delaware.gov

Financial Officer: Jennifer Helms

jhelms@townsend.delaware.gov

Public Works Supervisor: Richard Boyer

rboyer@townsend.delaware.gov

TOWN HALL

141 Main Street, Townsend, DE 19734 302-378-8082

townhall@townsend.delaware.gov

<https://townsend.delaware.gov/>

NEW CASTLE COUNTY GOVERNMENT

Web site: www.co.new-castle.de.us. It includes a link for e-mailing County Council members.

CODE ENFORCEMENT

Enforces county laws on zoning, signs, housing, weeds and trash. To file a code-enforcement complaint, contact the county Customer Information and Assistance Office, (302)-395-5555.

COUNTY COUNCIL

Meets 7:30 p.m. second and fourth Tue. (except August) in Council Chambers, first floor, Louis L. Redding City/County Building, 800 French St., Wilmington. Also meets most Tuesday afternoons for council committee meetings. (302)-395-8383.

EMERGENCY SERVICES

Ambulance, Fire, or Police dial	911
Walk-In Medical Care for minor injuries and illness	302-449-3100
Delaware Help Line	211
Domestic Violence Hotline	302-762-6110
Suicide Hotline	800-652-2929
Rape Crisis Contact	800-773-8570
Child Abuse Hotline	800-292-9582
Child Mental Health Services	800-969-4357
Poison Control Center	800-222-1222
Crime Stoppers	302-739-5927
Christiana Care Emergency Center	800-693-CARE

CUSTOMER INFORMATION AND ASSISTANCE OFFICE

(302)-395-5555, 8 a.m.-5 p.m. weekdays as a first stop for questions and code-enforcement complaints.

COMMUNITY SERVICES DEPARTMENT

Manages three senior centers, provides sports and recreation programs. Operates libraries and administers housing programs. (302)-395-5600.

LAND USE DEPARTMENT

Oversees land use and development. Four citizen panels, including the planning board and board of adjustment, also have jurisdiction over land-use and zoning issues. 395-5463. Also issues permits for building, including decks, pools and sheds, and for plumbing, heating, air conditioning, demolition and elevators; conducts building code inspections; registers home warranty companies; licenses home builders, contractors and sewer and drain cleaners; handles property assessment appeals.

Call 302-395-5400 for permits, 302-395-5515 for inspections and 302-395-5520 for assessment appeals.

SPECIAL SERVICES DEPARTMENT

Maintains about 6,184 acres of parkland, and maintains county property and vehicles. Responsible for sewer system.

Call 302-395-5700 for emergency sewer problems. 302-395-5790.

EMERGENCY SERVICES

CHRISTIANA CARE EMERGENCY DEPARTMENT

621 Middletown Odessa Road
Middletown, DE 19709
(302) 733-1000

Serving Middletown-Odessa-Townsend, this state-of-the-art full-service emergency department is open 24 hours – 7 days a week. Staffed by board-certified emergency physicians and emergency nurses. This stand-alone facility has 18 treatment rooms as well as a dedicated on-site laboratory and imaging services.

COUNTY SERVICES

MIDDLETOWN HIGH SCHOOL WELLNESS CENTER

The Middletown High School Wellness Center is located at the Middletown High School. (302)-378-5775

APPOQUINIMINK STATE SERVICE CENTER

122 Silver Lake Road
Middletown, DE 19709
(302)-696-3120

Business Hours: 8:00 a.m. - 4:30 p.m.

Facility Hours: 7:30 a.m. - 5:00 p.m.

Purpose: The Appoquinimink State Service Center currently offers client services administered by Delaware Health and Social Services (DHSS) divisions:

Division of State Service Centers 302-696-3120

Division of Public Health 302-378-5775

Division of Social Service 302-378-5781

Department of Services for Probation and Aftercare Children, 302-378-5778

Youth & Families Division of Vocational Rehabilitation 302-378-5779

WALK-IN MEDICAL CARE

CHRISTIANA CARE MEDICAL AID UNIT AT MIDDLETOWN

124 Sleepy Hollow Drive/Suite 100
Middletown, DE 19709
(302)-449-3100

The Christiana Care Medical Aid Unit has filled the need for top-quality, efficient, urgent care. Now, with full-service locations at Christiana (across Rt. 4, from Christiana Hospital), Glasgow (across from Hodgson Vo-Tech), and Middletown (off Bunker Hill Road), the 3 Medical Aid Units are more convenient than ever. Cuts, lacerations, sprains and fractures, coughs, colds, and sore throats, work-related injuries, eye and ear problems, minor burns, sports injuries and physicals... We're here for you when you need us. Open 7 days a week ~ 8 a.m. to 8 p.m., Holidays ~ 9a.m. to 5 p.m.

HEALTHWORKS

BAYHEALTH'S MIDDLETOWN MEDICAL CENTER

209 E. Main Street
Middletown, DE 19709
(302)-378-1199

The Middletown Medical Center offers diagnostic services including general x-ray, digital mammography, bone density, ultrasound, EKG and lab services. To better serve you, we use the digital PACS (Picture Archiving Communications System) in place of the traditional x-ray processes. With PACS, our board-certified radiologists are able to manipulate images on the computer which improves image abnormality detection and results in better clinical decisions.

Our hours of operation are Monday – Friday from 7:00 am to 5:30 pm, with later evening mammography services by appointment only. Low to no-cost mammography screening is available, if you qualify. Please call us today at 302-378-1199.

PUBLIC WORKS DEPARTMENT

Emergency (24-hours) (302)-378-2211

A MESSAGE FROM THE TOWNSEND MAYOR



Hello and welcome to the Town of Townsend!

The Town of Townsend is a unique town in Delaware. With the population growing nearly 300% in Town over the last 15 years, we have been able to maintain the small town feel for everyone to enjoy all while overseeing responsible growth.

The town Council and town staff are hard at work throughout the year planning many activities highlighted by our town Fair and Parade festival (June), our back-to-school event (August) and our Christmas caroling and tree lighting ceremony (December).

Throughout the year we plan various interactive activities for our resident families such as our annual Christmas light competition every December.

With cooperation and local presence from our growing Townsend police department and the Townsend Fire Company, there is a significant priority made towards the safety and well-being of our residents. Townsend is located in the Appoquinimink School district which is one of the highest rated districts in the State.

Townsend's unique combination of community identity, spirit and cooperation have helped make it one of the most attractive and desirable residential and maturing business locations in Southern New Castle County. It is close to shopping centers and service needs but far enough away to maintain the small town identity.

We welcome you all to come visit our Town or visit our webpage at townsend.delaware.gov to learn more about us!

Sincerely,
Scott Lobdell, P.E.
Mayor of Townsend



P.O. Box 223 • 141 Main Street • Townsend, DE 19734
Phone (302) 378-8082 • Fax: (302) 378-7099 • www.townsend.delaware.gov •
townhall@townsend.delaware.gov

ORGANIZATIONS

MIDDLETOWN ACTION NETWORK M.A.N.

(302)-378-1164

The mission of the Middletown Action Network is to provide services in the areas of: Early Anti-Drug Intervention, Policing, Drug Treatment and mental Health Services, Education, Housing and Employment. The Middletown Action Network is a collaboration between Police Agencies, Educational Institutions, Social Service Agencies and The Town of Middletown.

BUSINESS ORGANIZATIONS

Middletown Area 302-378-7545
Chamber Of Commerce

PRIVATE ORGANIZATIONS

Grand Lodge of Delaware Mason 302-652-4614
Moose Lodge 302-359-8900
V.F.W. Post 3792 302-378-9619
American Association
of University Women aauw-de.aauw.net

CIVIC ORGANIZATIONS

Lions Club 302-378-2995
Associated Community Talent, Inc. 302-378-7038

SERVICE ORGANIZATIONS

Alpha-Delta-Kappa-Iota Chapter adkdelaware.com
NCC Drug Unit 302-395-8110
NCC Drug Education 302-395-8050
Women's Club of Odessa 302-378-4900
Alcoholics Anonymous 302-655-5113
Narcotics Anonymous 800-317-3222
M.O.T. Rotary motrotary.org

YOUTH ORGANIZATIONS

Albion Soccer Club 302-231-3006
Boy Scouts 302-622-3300
Boys & Girls Club 302-378-7620
Delaware Union Soccer 302-235-3144
Cub Scouts 302-622-3300
Girl Scouts 302-456-7150
I9 Sports Leagues 302-894-3751
M.O.T. Basketball 302-990-8169
M.O.T. Youth Football 302-668-7131
M.O.T. Little League 302-376-6894
M.O.T. Cheerleading 302-562-3812



AGELESS ADVENTURES!

We're here to lend a helping hand to your family, friends, and neighbors in need of in-home care.

Our team of compassionate caregivers are dedicated to making life easier and more enjoyable!

From whipping up delicious meals to cleaning the house, running errands, and even accompanying to the theater, we assure the people you care about stay active and independent.

For more information on our home care services, visit:

**Griswoldcare.com/
new-castle-county/
or call**

302.456.9904

**SCAN TO
LEARN MORE.**



We Help You Live Assured.



TRANSPORTATION BUSES, TRAINS, PLANES

BUSES

For more information on all DART routes, go to www.DartFirstState.com

DART FIRST STATE NEW CASTLE COUNTY

Serving nearly all of New Castle County with more than 36 fixed routes. Primarily weekdays and includes some late-night and some Saturday service. A wheelchair lift-equipped bus may be arranged two days before the desired trip. Reduced fares available for senior citizens and the disabled. (800) 652-DART; 652-DART in New Castle County.

DART FIRST STATE INTERCOUNTY

Weekdays between Wilmington, Dover and Milford, offering connections to routes in New Castle, Kent and Sussex counties and to the Wilmington train station. Express service for commuters between Wilmington and Dover. All buses wheelchair lift-equipped. Fares: \$2.00 to \$10.00, depending on route traveled. Discounted DARTPass \$16 to \$120. (800) 652-DART; (3278); in New Castle County.

DART FIRST STATE PARATRANSIT

Weekdays statewide with limited Saturday service in New Castle County. Transportation for ADA-certified customers. Reservations required at least two business days in advance. (800) 553-DART.

GREYHOUND AND TRAILWAYS

Intercity and interstate routes from Wilmington Transportation Center, Front and French streets.

Greyhound, 655-6111 or www.greyhound.com

Trailways, (800) 858-8555 or www.trailways.com

AMTRAK

Wilmington station, Front and French streets. 4:30 a.m. to 11:59 p.m. Ticket office open from 7 a.m. to 10 p.m. Regional and national service. Frequent runs between Washington and New York make the Wilmington station the seventh busiest passenger rail station and 13th busiest in the country.

(800) 872-7245; www.Amtrak.com

SEPTA

Weekday commuter trains connect the Newark station at South College Avenue with stops at Delaware Park, the Wilmington Amtrak train station at Front and French streets, the Claymont station on Myrtle Avenue, and Philadelphia. There also is limited Saturday service at the Wilmington and Claymont stations. For information about SEPTA trains running from Wilmington to Philadelphia only, call DART First State at (800) 652-3278. Call SEPTA at (215) 580-7800 for information about all its trains, including those that run from Wilmington to Philadelphia.

On the Web: www.septa.org or www.dartfirststate.com

BALTIMORE-WASHINGTON INTERNATIONAL AIRPORT (BWI)

Off Baltimore-Washington Parkway, south of Baltimore. Regular Carriers: Air Canada, Alaska, Allegiant, American, Avelo, Boutique Air, British Airways, Condor, Contour, Copa Airlines, Delta, Frontier, IcelandAir, Jet Blue, Play, Southwest, Spirit, Sun Country Airlines, United, Apple Vacations, Vacation Express. 410-859-7683 or www.bwiairport.com

PHILADELPHIA INTERNATIONAL AIRPORT (PHL)

I-95 and Pa. 291, south of Philadelphia. Regular Carriers: Air Canada, Aer Lingus, Alaska, American, American Eagle, British Airways, Contour, Delta, Frontier, Jet Blue, Luftansa, Qatar Airways, Southwest, Spirit, Sun Country Airlines, United. Information: (215) 937-6937 or www.phl.org. Flights only: (800) PHL-GATE.

NEW CASTLE AIRPORT

Largest air facility in Delaware, with three major runways, ten taxiways and several aircraft parking ramps. Phone: (302) 571-6474 Located just five miles south of Wilmington, Delaware, and only a 35-minute drive from Center City Philadelphia, New Castle Airport is ideally situated for tenants who range from major corporations to individual owners of aircraft. Now offering direct flights to Florida destinations with Avelo Airlines. The airport is just a 10-minute drive from Wilmington Amtrak Station with 90-minute connections to New York City or Washington, DC. I-95, I-295 and the New Jersey Turnpike—the gateways to Washington, DC, New Jersey and New York—are only a five-minute drive from the airport. Their location makes access to the surrounding areas quick and easy.

Phone: 302-571-6474

www.newcastleairportilg.com



MOTOR VEHICLES

Call the state Division of Motor Vehicles in Wilmington at 434-3200, in Dover at 744-2500, in New Castle at 326-5000. Or visit www.delaware.gov then click on the "Resident" button and select "Motor Vehicles."

NEW RESIDENTS

State law gives new residents up to 60 days to obtain a Delaware driver's license and register vehicles. Other state licenses must be surrendered. Initial registration requires verification of ownership and safety and emission inspections for cars older than five model years. Out-of-state commercial driver's licenses must be replaced with the Delaware version within 30 days.

VEHICLE REGISTRATION

Proof of liability insurance and ownership are required. Re-registration can be done by mail if inspection isn't required. The State charges \$35 for a new title without a lien or \$55 for a title with a lien. A one-time document fee equal to 4.25% of the value of the vehicle (but not less than \$8.00).

INSPECTION, TESTING AND LICENSING

Inspection lanes and licensing facilities are open 8 a.m.-4:30 p.m. Mondays, Tuesdays, Thursdays and Fridays; and noon-8 p.m. Wednesdays. All are closed on major legal holidays. Emissions and safety inspections are required on vehicle models older than 5 years or on vehicles that have previously failed an inspection. Inspections are good for two years.

DELAWARE CITY MOTOR VEHICLES

2101 Mid County Drive, New Castle, DE 19720
(302) 326-5000.

DOVER INSPECTION LANES

303 Transportation Circle, Dover (302) 744-2500
Administrative offices phone number (302) 434-3200

DRIVER'S LICENSES

Required identification documents are a certified birth certificate, immigration document or valid out-of-state driver's license showing your name and date of birth, a Social Security card and two documents showing your Delaware residential address. All drivers younger than 18 must pass an approved driver's education course, and a parent or legal guardian must give written consent. A written and road test and eye screening are mandatory for minors and those with foreign licenses. Written and road tests may be waived for adults at the division's discretion.

GRADUATED DRIVER'S LICENSES

For those under 18, after first obtaining a learner's permit, which can be obtained at 15 years and 10 months of age. To obtain a learner's permit, an applicant must have passed a certified Delaware driver education course. For more information, call (302) 739-4885.





a neighborly company

Comfort You Can Feel EFFICIENCY YOU CAN TRUST

\$59

Heating or Cooling Tune-Up

CALL FOR OIL PRICING

*Terms and Conditions apply.
Can not be combined with any additional offer.
Offer expires 12/31/2025

\$500 OFF

Any System Replacement

*Cannot combine with any other offer.
Must be presented at time of purchase,
qualifying systems only. Offer expires 12/31/2025

The Aire Serv team is always here to ensure your comfort, no matter the season! Give our team a call today to schedule your appointment.

Ready To Schedule?



SCAN HERE

A local business that CARES rooted in the community of Middletown.



302.330.8409 | YourAireServ.com

Where there's
a WSFS, there's
a way.

Middletown Branch

400 East Main Street

Middletown, DE 19709

302.449.5170



MEMBER FDIC
NMLS #417673

WSFS bank

We Stand For Service®

CHRISTOPHER V. THOMPSON

CEO & Founder

 **CT
LEDGER LLC**

"Bookkeeping in the Cloud"



(302) 438-6957



cvthompson@ctledger.com



ctledger.com



Professional Services Include:

- Financial Record Keeping
- Ledger Management
- Account Reconciliation
- Financial Reporting
- Budgeting Assistance
- Consulting and Advice
- Software Expertise
- Compliance and Regulation
- Tax Preparation Support

SCHOOLS, UNIVERSITIES, COLLEGES + HOUSES OF WORSHIP

APPOQUINIMINK SCHOOL DISTRICT

Tony J. Marchio Administrative Offices

313 South Fifth Street, PO 4010

Odessa, DE 19730-4010

www.apposchooldistrict.com

Main Phone	302-376-4128
Superintendent	302-376-4105
Business Office	302-376-4126
Construction	302-449-3839
Curriculum, Instruction & Assessment	302-376-4271
Facilities	302-376-4124
Human Resources	302-376-4275
Nutrition	302-376-4106
Operations	302-376-3492
Safety & Security	302-376-4124
School Choice	302-376-4135
Special Education	302-376-4130
Student Services	302-376-4111
Transportation	302-376-4132

MOT CHARTER SCHOOL

(grades: pre-K-8)

1156 Levels Road, Middletown, DE Office: 302-376-5125

MOT CHARTER HIGH SCHOOL

1275 Cedar Lane Rd, Middletown, DE 19709

Office: (302) 696-2000

PRIVATE SCHOOLS

Middletown's location in central Delaware affords access to many private and parochial schools with a 45-minute radius.

ST. ANDREW'S SCHOOL

(9-12, coed, Episcopal boarding school)

350 Noxontown Road, Middletown, DE 19709

(302) 378-9511 Website: www.standrews-de.org

Co-educational boarding college-preparatory, arts, and religious studies school, affiliated with Episcopal Church. Founded: 1929. Setting: rural. Students are housed in single-sex dormitories. 2,600-acre campus. 10 buildings on campus. Total enrollment: 309. Upper school average class size: 11. Upper school faculty-student ratio: 1:6.

ST. ANNE'S EPISCOPAL SCHOOL

(Pre-K through 8th Grade)

211 Silver Lake Road, Middletown, DE 19709

302-378-3179

Website: www.stannesde.org

Co-ed independent day school that offers differentiated instruction in a small, family oriented and diverse community with a commitment to intellectual, spiritual, physical, social and artistic growth and character development. Total enrollment 297. 7:1 student- teacher ratio.

UNIVERSITY OF DELAWARE, NEWARK CAMPUS

Newark, DE 19716

Office: 302-831-2792

www.udel.edu

DELAWARE STATE UNIVERSITY

1200 North DuPont Hwy., Dover, DE 19901

Day: 302-857-6060 Evening: 302-857-6290

www.desu.com

GOLDEY - BEACOM COLLEGE

4701 Limestone Rd, Wilmington, DE 19808

Office: 302-998-8814

www.gbc.edu

DELAWARE LAW SCHOOL

Delaware Campus

4601 Concord Pike, Wilmington, DE 19803

Office: 302-477-2100

delawarelaw.widener.edu

WILMINGTON UNIVERSITY

320 N Dupont Hwy, New Castle, DE 19720

Office: 877-367-5464

www.wilmu.edu

WASHINGTON COLLEGE

300 Washington Avenue, Chestertown, Maryland 21620

Office: 410-778-2800

www.washcoll.edu

VOCATIONAL – TECHNICAL HIGH SCHOOL

St. George's Technical High School

555 Hyett's Corner Rd, Middletown, DE (302) 449-3360

LOCAL HOUSES OF WORSHIP - MIDDLETOWN

African Methodist Episcopal 302-378-2223

Trinity AME Church

Real Life Community Church 302-464-1004

938 Middletown Warwick Road

Connection Community Church 302-378-7692

4744 Summit Bridge Road

Mt. Calvary Baptist Church 302-378-2777

300 New Street

Mission Fellowship Church 302-378-5416

Everett Theatre

St. Anne's Episcopal Church 302-378-2401

15 East Green Street

Middletown Jehovah's Witnesses 302-378-4889

Noxontown Road

Love of Christ Church 302-838-0603

316 Warwick Road

Church on Main 302-464-1191

44 West Main Street

Grace Orthodox Presbyterian Church 302-545-5038

13 Pennington Street

SCHOOLS, UNIVERSITIES, COLLEGES + HOUSES OF WORSHIP (CONTINUED)

St. Joseph's Catholic Church	302-378-5800
371 East Main Street	
Bethesda United Methodist Church	302-378-2313
116 East Main Street	
Dale United Methodist Church	302-696-2525
143 East Lake Street	
Ringgold Chapel A.M.E.	302-378-4681
5017 Summit Bridge Road	
Middletown Baptist Church	302-378-2443
419 Armstrong Corner Road	
Living Grace Worship Cathedral	302-285-9754
100 W. Green Street	
Wings of Faith Kingdom Ministries	302-378-1902
27 Anderson Street	
Rehoboth Apostolic Church	302-378-4087
209 E. Lake Street	
Holy Hill Worship Center	302-376-3720
17 W. Cochran Street	
RCCG Amazing Grace Chapel	320-299-8406
211 W. Main Street	
Harvest House Church	302-438-1787
1191 Boyds Corner Road	
Vision Fellowship Ministries	302-898-0679
201 New Street	
Middletown Church of Christ	302-463-4644
128 Patriot Drive	
Freedom Church	302-283-9278
301 Wood Street	
Evangelical Tree Church	302-376-9110
11 Wood St. Middletown, DE	

MT. PLEASANT

New Covenant Presbyterian Church	302-378-4446
1125 Jamieson Corner Road	

SUMMIT BRIDGE

Mt. Pisgah UAME	302-378-2764
516 Old Summit Bridge Road Middletown, DE	
Summit United Methodist Church	302-378-3760
554 Old Summit Bridge Road	

ODESSA

Crossroads Presbyterian Church	302-378-6235
627 Vance Neck Road	
St. Paul's United Methodist Church	302-378-2420
Main Street	
Tree of Life Lutheran Church	302-378-3345
505 Osborne St. Odessa, DE	

TOWNSEND

Free Will Baptist Church	302-378-1511
4519 S. Dupont Parkway	
Glorious Church of God	302-376-9464
145 New Discovery Road	
Immanuel United Methodist	302-378-8203
209 Main Street	

Lee's Chapel	302-378-2106
423 Blackbird Landing Road	
Lifhouse Church	302-449-0017
101 Karins Blvd, Townsend, DE 19734	

RECREATION

SOUTHERN PARK

1276 Shallcross Lake Road
Middletown, DE 19709

Middletown's newest park opened September of 2023 featuring 44-acres of paved walking trails, large playground area, picnic pavilion, zip lines, GaGa pit, basketball, tennis and pickleball courts and even a sledding hill.

SILVER LAKE PARK, MIDDLETOWN

Residents enjoy a variety of recreational activities at the town's Silver Lake Park adjacent to Silver Lake Elementary School on East Cochran Street. The 40-acre park includes tennis and basketball courts, walking trails, a swimming pool, playground, soccer fields, picnic areas and pavilions. The pool is open June through August through management of the Middletown YMCA.

Organized sports at Silver Lake Park include men's and coed softball, girl's softball, coed soccer and boy's football. Sports facilities and organizations are offered by local schools, local sports groups, the YMCA, and the Police Athletic League.

CHARLES E. PRICE MEMORIAL PARK

Directions: From downtown Middletown, take Del. 299 out to U.S. 301. Make left onto 301, pass the Wal-Mart SuperCenter on the right and make the next left onto Del. 15 (Levels Road). The Park is on the right-hand side of the road, just at the curve to the left toward St. Anne's Church Road. Price Memorial Park at Levels Road features miles of walking trails. To walk two (2) miles, start at the entrance of the park on Levels Road and make one full circle around the walking trails.

MIDDLETOWN NATURE AREA

The Middletown Nature Area on South Broad Street features a raised nature trail in a tranquil setting, with woods and a stream, as well as a picnic pavilion.

LITTLE LEAGUE AND SENIOR LEAGUE BASEBALL

Little League and Senior League games are played at Duke Field on Cleaver Farm Road.

RECREATION PHONE NUMBERS

Silver Lake Pool Information	302-828-8191
Middletown YMCA	302-616-9622
Middletown Parks Department	302-378-7459
Playground Information	302-378-5670
Police Athletic League	302-656-9501
Boys & Girls Club	302-378-7620
M.O.T. Basketball	302-990-8169
M.O.T. Youth Football	302-668-7131
M.O.T. Little League	302-376-6894
M.O.T. Cheerleading	302-562-3812
Albion Soccer Club	302-231-3006
Boy Scouts	302-622-3300
Delaware Union Soccer	302-235-3144
Cub Scouts	302-622-3300
Girl Scouts	302-456-7150
I9 Sports Leagues	302-894-3751

ATTRACTIONS + ANNUAL EVENTS

WESTOWN MOVIES

12 theaters offering state of the art & 3D GTX movie experience.

THE EVERETT THEATRE

45 W. Main Street, Middletown. "Middletown's first stage opened in 1863. Originally the building was known as the "Town Hall and Opera House." It flourished as a performing arts, cultural center and community meeting place until falling in a spectacular fire in 1918. The second structure met the same demise as its predecessor, burning to the ground on April 6, 1922. The name of the newly built building was left to the community who submitted their choices to the Middletown Transcript. The winning name "The Everett" was in honor of the man who ensured the building would rise again and withstand the test of time Mr. John Everett Lewis.

In 1989, the movie "Dead Poets Society" was filmed at both St. Andrew School in Middletown and The Everett Theatre which is featured in the film as Hedley Hall which presents "A Midsummer's Night Dream" and will forever be documented in film history. The Everett remains the area's cultural center for the cinematic, visual, and performing arts. The Everett's stage is home to live stage productions, children's theater, and one of the finest movie screens on the Delmarva Peninsula.

Phone: 302-378-7038 Email: info@theeverett.org

Website: TheEverett.org

THE MIDDLETOWN HISTORICAL SOCIETY

The Middletown Historical Society was founded in 1985 in an attempt to save a local historic landmark from demolition. The attempt failed but the small core of members remained determined to someday have a home and a museum. The organization remained homeless for some 21 years, meeting here and there, trying to find places to safely store artifacts of their growing collection. The Mayor and Council of Middletown gave the Society the use of the Old Academy, built in 1826 and on the National Register of Historic Places, the perfect location for the Historical Society's home and museum.

Museum exhibits and research room at 216 N. Broad St. are open from 1 to 4 pm on the first Friday and third Saturday of each month. For more information call 302-378-7466 or visit

www.middletowndehistory.com

HISTORIC ODESSA FOUNDATION

An enclave of 18th/19th century buildings located in a historic village, offering guided tours, living history demonstrations, dessert, tea, lunch and dinner in a Cantwell's Tavern. Reservations required. For information call 302-378-4014.

MIDDLETOWN MUSIC AND ARTS

With 2 locations 4380 Summit Bridge Rd., Middletown – Phone 302-376-7600 & 2900 Concord Pike, Ste. E, Wilmington – Phone 302-477-9511. Voted #1 Music Store offering Music Lessons, Summer Camps, Band Rentals, Kindermusic & Repairs.

ANNUAL EVENTS

HISTORIC EVERETT THEATRE

Held each summer is a popular Children's Workshop, designed to expose local children to the performing arts.

SUMMER CONCERT SERIES

In the summertime, a variety of musicians perform at the bandstand at the Middletown-Odesa-Townsend Senior Center, 300 South Scott Street. It's part of the Summer Concert Series.

JULY 4TH CELEBRATION

Middletown's July 4th Celebration of our country's independence features a spectacular fireworks display at Silver Lake Park, off East Cochran Street.

OLDE TYME PEACH FESTIVAL

On the third Saturday in August, Middletown's Olde Tyme Peach Festival brings crowds to Main Street. The festival, which celebrates the town's role as an important 19th Century peach growing region, features a variety of entertainment, food and vendors. Sponsored by the Middletown Historical Society.

CHRISTMAS IN ODESSA

First Saturday in December. Sponsored by Women's Club of Odessa. 302-348-4900

MIDDLETOWN ANNUAL PARADES

For complete information contact Middletown Main St. at 302-378-2977

HUMMER'S PARADE—NEW YEAR'S DAY

A hilarious tradition unique to Middletown, this always quirky parade is known for its political satire and twisted take on current events. (It's actually a spoof of the Mummers' Parade in Philadelphia.)

LITTLE LEAGUE PARADE—MAY PEACH FESTIVAL PARADE—AUGUST CHRISTMAS PARADE—DECEMBER

There is also various smaller parades organized by local service organizations throughout the year.

STATE CHAMPIONSHIP CORNHOLE & BREWFEST

October features the Cornhole & Brewfest and is a tribute to the fall season.



STATE PARKS, HISTORICAL ATTRACTIONS, PERFORMING ARTS

STATE PARKS WITHIN 30 MINUTES OF THE M.O.T. AREA

For inland Parks the Daily fee is \$4.00 for Delaware Registered vehicles, \$8.00 for others for Ocean Parks \$5.00 per day for Delaware Registered Vehicles and \$10.00 for out of state vehicles. The fee is charged from March 1 to November 30. There are no fees from December 1 through February 29th or 28th. Daily Pass booklets are available for inland Parks-\$20.00 (6 Passes) for Delaware Registered vehicles and \$20.00 (3 Passes) for out of state vehicles. Ocean Parks are \$25.00 (6 passes) for Delaware Registered vehicles and \$25.00 (3 passes) for out of state vehicles. There is no daily fee for Delaware Firefighter/EMT personnel. The Annual Pass is not valid at the Brandywine Zoo, at Wilmington State Parks and the ferry to Fort Delaware State Park. The annual pass is \$35.00 for Delaware Registered vehicle and active Non-resident Active Military Pass. \$70.00 for Out of State registered vehicle. Delaware Active Military Pass is \$17.50. Senior Pass is \$18.00 for Delaware Registered vehicle and \$35 for Out of State registered vehicle. Operation Iraqi Freedom or Operation Enduring Freedom Veteran Pass FREE. The Web site is www.destateparks.com.

BELLEVUE

Carr Road, off I-95 at Marsh Road, Bellevue; 302-577-3390. 328 acres, tennis, horseback riding, fishing pond, jogging track, disc golf and fitness trail, meeting facility, evening concerts June through August, hayrides in the fall, cultural and environmental activities year-round.

BRANDYWINE CREEK

Adams Dam Road, near Del. routes 100 and 92, Montchanin; 302-577-3534. About 1,000 acres, year-round nature center with programs, disc golf course, picnic facilities, youth camping, fishing, canoeing, nature center, cross-country course and about 12 miles of hiking trails.

FORT DELAWARE

Pea Patch Island in the Delaware River, 38 Clinton St., Delaware City. Experience Civil War history in person. Originally a Union military post that held approximately 32,000 prisoners over the course of the war, Fort Delaware is alive with award-winning living-history interpreters who put a human face on history. Witness firsthand cannon fire, cooking demonstrations, the laundry, officers' quarters and military drills. A ferryboat takes you out to the island, which also encompasses a large wading bird sanctuary of herons, egrets and ibis. Contact the park or visit www.destateparks.com for hours of operation. Park Office Hours 8am-4pm. Open April 30th – September 25th. Ages 2-12 \$7.00 Ages 13 and over \$12.00 Children under 2 FREE. Seniors (over 62) and Military \$11.00. Phone: 302-834-7941.

FORT DUPONT

North end of C&D Canal, DE Rt. 9, Delaware City. 322 acres. Offers a self-guided interpretive trail as well as periodically scheduled walking tours. Other facilities available are tennis courts, a basketball court and a ball field. A popular fishing area, the park provides a beautiful view of the Delaware River. Phone: 302-834-7941.

FOX POINT

On Lighthouse Road just off Edgemoor Road exit of I-495; 302-577-3390. Narrated trail, two large pavilions, restrooms and playgrounds, wildlife viewing and view of Delaware River shipping activity; handicapped-accessible. 170 acres.

LUMS POND

Five miles south of I-95, off Del. 896, near Kirkwood; 302-368-6989. Largest freshwater pond in the state. Fishing, boat rentals, youth and family camping (\$16-\$50 per night for residents. \$19-\$58 per night for non residents), hiking trails, concession stand, picnic areas, playground, disc golf course, hunting-dog training area and sports complex for volleyball, tennis, shuffleboard, horseshoes and baseball, yurt (circular tent) rentals, several hiking trails including a 7.5-mile trail that circles the pond, 10 miles of multipurpose trails for mountain bicycles and horses. 2,100 acres.

WHITE CLAY CREEK

With three noncontiguous areas and accessible at these locations: two miles northwest of Newark on Del. 896; three miles northeast of Newark on Del. 72; or Polly Drummond Hill Road off Kirkwood Highway in Pike Creek; 302-368-6900. Fishing in White Clay Creek, picnic pavilion, extensive system of nature and fitness trails, youth camping, year-round nature center with programs, wildlife preserve and disc golf course. 3,400 acres.

WILMINGTON STATE PARKS

A connected cluster of four urban parks: Brandywine, Rockford, H.Fletcher Brown, Kentmere Parkway and Hobbs Property; 302-577-7020. Oasis within city of Wilmington along Brandywine River with connecting trails. Amenities include Brandywine Zoo (302-571-7788), Abessinio Stadium, picnic areas, ball fields, pavilions, educational programs and community events. The Zoo is open daily February-December from 10am-4pm January open Friday through Sunday 10am-4pm. Admission April 1 – September 30 – Children ages 3 to 17 and Seniors 62 & over- \$7.00, Adults age 18-61 \$9.00 Children under 3 FREE, October 1st to November 30th and March 1 to March 31 – Children ages 3-17 \$5.00, Senior Citizens 62 & Over \$6.00, Adults 18-61 \$7.00, Children under 3 FREE. December 1 to February 28 admission is FREE for all. Membership fees available check website destateparks.com/GoPlay/BrandywineZoo.

ATTRACTIONS WITHIN 30 MINUTES OF M.O.T AREA DELAWARE TOURISM OFFICE

[website -visitdelaware.com](http://website-visitdelaware.com)

HISTORICAL ATTRACTIONS

FORT CHRISTINA PARK

East Seventh St., Wilmington. Site of the landing of the Swedes and Finns in 1638. "The Rocks," a monument sculpted by Carl Milles, marks the spot. Nearby is the Stalcup family log cabin. Phone: 302-652-5629

(CONTINUED)

JOHN DICKINSON PLANTATION

340 Kitts Hummock Road, roughly seven miles south of Dover. Historic brick mansion and modern visitors' center interpret the agricultural life of an early American Quaker patriot who freed his slaves. He also was a popular writer, a governor of the state and contributor to the Constitution. Reconstructed slave quarters. Beautiful walks. Open year-round. Phone: 302-739-3277

KALMAR NYCKEL SHIPYARD

1124 E. Seventh St., Wilmington. Living-history shipyard and museum. Home of Delaware's Tall Ship Ambassador, the Kalmar Nyckel, an authentic re-creation of the historic vessel that brought the first European settlers to the Delaware Valley in 1638. Ship and shipyard available for tours, private charters, weddings and private functions. Phone: 302-429-7447 www.kalnyc.org

NEMOURS MANSION & GARDENS

1600 Rockland Rd., Wilmington. Set among spectacular French formal gardens, this Carrere and Hastings designed Louis XVI-style chateau was built for Alfred I. DuPont, and contains 102 rooms furnished with fine examples of antique furniture, rare rugs, tapestries and outstanding works of art. Reservations recommended for individuals and required for groups. Phone: 302-651-6912 nemoursestate.org

OLD NEW CASTLE

Six miles south of Wilmington on the Delaware River. The first seat of government in the state, this lovely village is a step back in time. Narrow streets lined by picturesque 18th century homes. Beautiful park along the river. Antiques shops and dining in historic buildings. Phone: 302-322-2794

READ HOUSE & GARDENS

42 The Strand, Old New Castle. Built in 1801, this elegant mansion overlooks the Delaware River. Furnished in the Federal and Colonial revival styles, the house endures as one of the foremost examples of the federal style of architecture. It is surrounded by a 1 1/2 acre formal garden. Phone: 302-322-8411 readhouseandgardens.org

ROCKWOOD MANSION PARK

610 Shipley Rd., Wilmington. Mid-19th-century, Victorian manor house illustrates rural Gothic architecture. Lush, gardenesque landscape complemented by conservatory with period flora. Museum shop with Victorian and tea memorabilia. Phone: 302-761-4340 www.rockwood.org

WILMINGTON & WESTERN RAILROAD

2201 Newport Gap Pike (Rt. 41 North), Wilmington. The steam/diesel powered train tours through the scenic Red Clay Valley. Trains operate rain or shine. Many special events, dinner trains throughout the year. Call for current brochure/timetable. Phone: 302-998-1930 www.wvrr.com

WINTERTHUR MUSEUM & GARDEN

5105 Kennett Pike, Winterthur. Home to Henry Francis du Pont's unsurpassed collection of antiques and Americana, and a glorious 60-acre naturalistic garden. Children of all ages will enjoy Enchanted Woods, a fairy-tale garden of fun and discovery. Winterthur offers a variety of tours, exhibitions and programs for all ages. Phone: 800-448-3883 www.winterthur.org

PERFORMING ARTS

DELAWARE CHILDREN'S THEATER

1014 Delaware Ave., Wilmington. Favorite classics presented in a century-old theater house listed on National Register of Historic Places. Phone: 302-655-1014 www.DEChildrensTheatre.org

DELAWARE SYMPHONY ORCHESTRA

100 West 10th St, Suite 1003 Wilmington. Delaware's premiere professional orchestra, performing October through May. Venues are DuPont Country Club, Wilmington, Copeland Hall at the Grand Opera House, Wilmington, Gold Ballroom at Hotel DuPont, Wilmington and Cape Henlopen High School, Lewes. Ticket prices range from \$30-\$85 depending on venue. website should be. delawaresymphony.org

DELAWARE THEATRE COMPANY

200 Water St., Wilmington. Brandywine Valley's only resident professional theatre. Their six-play season presents classic and contemporary works and brings noted professional actors, directors and designers to the region. Group rates available. Phone: 302-594-1100 Delawatheatre.org

OPERA DELAWARE

4 S. Poplar St., Wilmington. One of the oldest opera companies in the nation, with 58 seasons of fine performances. Since its founding in 1945, the company has presented more than 160 productions of nearly 100 operas, including 16 world premieres. Phone: 302-658-8063 operade.org

THE GRAND

3 venues in Wilmington— Copeland Hall, The Baby Grand, and The Playhouse. Over 100 performances, ranging from full symphony orchestras, dance and opera to stand-up comedians, jazz, world culture, events, and programs for young people. Considered to be among the best for its acoustics and intimacy. Shows presented all year long. Phone: 800-374-7263 thegrandwilmington.org

UNIVERSITY OF DELAWARE PROFESSIONAL THEATRE

110 Orchard Rd, Newark. Three-year, graduate theater conservatory offering public performances from a primarily classic repertoire, such as Shakespeare, Shaw, Chekhov and Ibsen. Phone: 302-831-2204 rep.udel.edu

THE MUSIC SCHOOL OF DELAWARE IN WILMINGTON AND MILFORD

4101 Washington St., Wilmington. A premier regional resource for music education and performance, offering instruction and experience to students of all ages and ability levels. Annual concert calendar includes professional artist performances, student recitals, family concerts and cultural heritage celebrations. The school is within Wilmington city limits, near Rockwood Museum. Phone: 302-762-1132 musicschoolofdelaware.org

(CONTINUED)

MUSEUMS

AIR MOBILITY COMMAND MUSEUM

1301 Heritage Road, Dover. Located on the Dover Air Force Base houses a large collection of vintage and veteran Aircraft, plus historical artifacts since the beginning of the air base in 1941. Has over 24 aircraft on display, and features more multi-engine aircraft than the National Air & Space Museum in Washington, DC. Open to the public Wednesday through Sunday 9am-4pm except for Federal Holidays but Veterans Day. No special ID is required. Entrance is on De Route 9 one half mile from the intersection of US 113. Open year-round except federal holidays. Admission is free, but donations are welcome.

Phone: 302-677-5938 www.amcmuseum.org

BIGGS MUSEUM OF AMERICAN ART

406 Federal St., Dover. Experience two centuries of American art. Discover the rich tradition of Delaware Valley antiques made and owned by fascinating people. Special exhibitions are sure to enchant you.

Phone: 302-674-2111 www.biggsmuseum.org

DELAWARE STATE POLICE MUSEUM & EDUCATION CENTER

1425 North DuPont Blvd., Dover, DE. The Museum is open Tuesday through Saturday 10am-4pm except State and Federal Holidays. There is no charge for admission. Guided tours are available by calling 302-739-7700 www.dspmuseum.com

DELAWARE AGRICULTURAL MUSEUM & VILLAGE

866 N. Dupont Hwy, Dover. The museum houses a variety of antique tractors and farm equipment, the first commercial broiler chicken house in Delaware, a crop duster, log cabin, and changing art exhibits. A special "Please Touch" exhibit is a favorite with young children, where they can pretend to milk a cow, drive a buggy, try on farm clothes, and enjoy other fun activities. Hours of Operation Wednesday- Saturday 10am-3pm Admission Adults 18 and over \$8.00, Seniors and Military \$6.00, Youth age 6-17 \$5.00, and Children 5 and under FREE.

Phone: 302-734-1618 www.agriculturalmuseum.org

DELAWARE ART MUSEUM

2301 Kentmere Parkway Wilmington, Delaware 19806. Distinguished collections of American painting, illustration and English Pre-Raphaelite art are showcased in handsome galleries along with important changing exhibitions from the world's leading art museums. One of Delaware's cultural gems, the museum offers dynamic public programs, a children's participatory gallery, a unique museum store and an Art Sales & Rental Gallery. Hours of operation Wednesday through Sunday 10am-4pm Open Thursday evenings until 8pm April Through December. Admission Adults \$14.00, Students (with valid I.D.) \$7.00, Youth (ages 7-18) \$6.00, Children age 6 and under FREE.

Phone: 302-571-9590 www.delart.org

DELAWARE HISTORY MUSEUM

504 Market St., Wilmington. In the heart of Wilmington, the history museum presents "Distinctively Delaware." a high-tech, interactive exhibition of Delaware's history from the state's first settlement in the 1600s through its incarnation as a 20th-century corporate

capital. "Grandma's Attic" kids museum offers a hands-on history experience for children.

Phone: 302-656-0637 www.hsd.org

DELAWARE MUSEUM OF NATURE & SCIENCE

4840 Kennett Pike, Wilmington. Explore an African watering hole; look beneath the seas; come face to face with a jaguar; encounter life-sized dinosaurs. Families and naturalists are invited to participate in an adventure of discovery. Through dioramas, exhibits, and special programs, the many facets of our natural world are explored and explained. Hours are Daily 9:30am-4:30pm. Admission General, age 3 and up \$14.50, Toddler age 1-2 \$4.25 Under 12 months FREE all admissions have a 5% discount if paid in cash. Phone: 302-658-9111 www.delmns.org

DELAWARE SPORTS MUSEUM & HALL OF FAME

801 Shipyard Drive., Wilmington. Sports history of Delaware from 1860 to the present comes alive through photos, stories, artifacts and memorabilia. Exhibits tell the story of the accomplishments of the First State's athletes, coaches, officials, administrators, sportswriters and broadcasters.

Delaware's Sports Hall of Fame inductees are honored in the museum's exhibits. Hours Every Saturday from 10am-2pm and 2 hours before each Blue Rocks game (closes 30 minutes before Game time) Free Admission.

Phone: 302-425-3263 www.desports.org

THE DELAWARE CONTEMPORARY

200 S. Madison St., Wilmington. An exciting 33,000-square-foot museum boasting 7 galleries, 26 on-site artist studios, gift shop, auditorium, classroom and more. Located on the Wilmington Riverfront. There is always something new, with more than 30 exhibitions annually of locally, regionally and nationally recognized artists. Hours are Thursday through Sunday 12pm-5pm. Free but suggested donation is \$12.00 adults, \$6.00 children.

Phone: 302-656-6466 www.decontemporary.org

HAGLEY MUSEUM

200 Hagley Creek Road, Wilmington. Where the duPont story begins in Delaware's Brandywine Valley. Outdoors, the museum features the original duPont mills, estate, and gardens on the banks of the Brandywine River. Indoors, the dynamic, new "DuPont Science and Discovery" exhibit is full of interactive science fun for everyone. Hours are daily 10am-4pm. Admission prices vary depending on which exhibits are open. Check website for current prices and exhibit days.

Phone: 302-658-2400 www.hagley.org

HISTORIC HOUSES OF ODESSA

Hours: Open March through December, Tuesday through Saturday, 10:00 a.m. – 4:30 p.m. (last tour is at 3:00 p.m.), Sunday, 1:00 p.m. – 4:30 p.m. Group and school tours year round by reservation. Call for special times and prices for December holiday tour. Closed January and February, Easter, July 4th, Thanksgiving Day, December 24 and 25. Admission: Adults \$10.00; Groups, Seniors, Students \$8.00, Children under 6 are free. Member discounts available. General Information: For reservations, events or membership call 302-378-4119 or Fax 302-378-4050 www.historicodessa.org

(CONTINUED)

IRON HILL SCIENCE CENTER

1115 Robert L. Melson Lane Newark, DE 19702. Natural history museum sponsored by Delaware Academy of Science. Collection includes taxidermy, rocks and minerals (fluorescent display), fossils, and archaeological artifacts, most indigenous to Delaware. Surrounded by 19 acres of nature trails. Housed in a former one-room schoolhouse, site was mined for jasper and iron ore. Phone: 302-368-5703 www.ironhillsciencecenter.org

JOHNSON VICTROLA MUSEUM

375 S. New Street, Dover. Features an extensive collection of Victor Talking Machines (early record players) and memorabilia. Company founder and inventor Eldridge Reeves Johnson, a native Delawarean, was a competitor of Thomas Edison. Museum exhibits include a 1920's Victrola dealer's store with a collection of talking machines, cabinet Victrolas, early records, and an original painting of 'Nipper,' the dog that became the trademark for RCA, known as "His Master's Voice." Phone: 302-739-3262 www.history.delaware.gov/johnson-victrola-museum/

ATTRACTIONS & RECREATION

BOMBAY HOOK NATIONAL WILDLIFE REFUGE

2591 Whitehall Neck Road (Del. 9 east of Smyrna); 653-6872. Established in 1937. Nearly 16,000 acres managed for migrating and wintering waterfowl and migrating shorebirds and songbirds. A 12-mile auto-tour route provides easy viewing of birds located in impoundments and in tidal salt marsh areas. Five short walking trails are located along the auto-tour route. Hours – open ½ hour before sunrise – closed ½ hour after sunset. Phone: 302-653-9345 <http://bombayhook.fws.gov>

BOWLING

Pleasant Hill Lanes 302-998-8811
Mid County Lanes 302-530-5069

BRANDYWINE ZOO

1001 N. Park Drive, Wilmington. Delaware's only zoo is conveniently located on the banks of the Brandywine River. Visitors view wild and exotic animals such as majestic Siberian tigers, playful North American river otters, colorful macaws and curious South American tamarin monkeys. Phone: 302 571-7788 <https://brandywinezoo.org/>

CHRISTIANA MALL

715 Christiana Mall Rd., Newark. Experience tax-free shopping at its best! Discover an incredible mix of more than 130 sought-after stores, including Pottery Barn, M.A.C., Williams-Sonoma, Ann Taylor, Banana Republic, J. Crew and more! Plus, Macy's, Crate & Barrel and JC Penney. Phone 302-731-9816 www.christianamall.com

DELAWARE PARK CASINO & RACING

777 Delaware Park Blvd., Wilmington. Thoroughbred horse racing, slot machines and big-winning simulcast racing at one location. Free general admission. Banquet and group packages available. Phone: 302-994-2521 www.delawarepark.com

DOVER AIR FORCE BASE

1301 Heritage Road, Dover AFB. The Dover Air Force Base is one of the best-known attractions in Central Delaware. The base is important to the country's defense, as it represents one-fourth of the nation's strategic airlift capacity. For information about the base, contact the Public Affairs Division, 436th Airlift Wing, Phone: 302-677-3372 www.dover.af.mil/

DOVER DOWNS

U.S. 13, Dover. NASCAR races draw more than 140,000 fans for two weekends in June and September. Live harness racing November through April. Simulcast racing and slots year-round. 302-674-4600 www.doverdowns.com

ICE SKATING ARENAS

Skating Club of Wilmington 302-656-5005
University of Delaware 302-831-2868

ROLLER SKATING

Christiana Skating Center 302-366-0473
christianskatingcenter.com
Dover Skating Center 302-697-3218
<https://doverskate.com/>

UNIVERSITY OF DELAWARE ATHLETICS, NEWARK

Exciting college football, basketball, & lacrosse sports action. Call 302-831-2257 for ticket information and schedules of all athletic events.

UNIVERSITY OF DELAWARE PUBLIC ICE ARENA

Public ice skating and host of Olympic skating events and ice shows. Open year round. Phone: 302-831-2868

WILMINGTON BLUE ROCKS

Frawley Stadium, 801 Shipyard Drive, Wilmington. Class Single-A Advanced affiliate of the Boston Red Sox. The team plays a minimum of 70 baseball games a season at beautiful Frawley Stadium, located just off I-95. Games played April-Sept. Phone: 302-888-2015 www.bluerocks.com





LAW OFFICE OF
Heather A. Long

**PERSONAL INJURY &
WORKERS' COMPENSATION**

CONTACT US

(302) 466-LONG



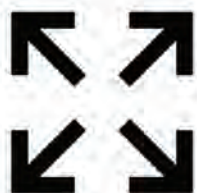
info@injuryde.com



injuryde.com



501 Main Street Odessa, DE 19730



302 MEDIA

Video Production
Photography
VFX
Graphic Design
Visual Marketing
Aerial Photography

Mike Windley

*Emmy Award-Winning
Director/Producer*

302-535-4268

mike@302.media

Middletown, Delaware

<https://302.media>



M.O.T.



JEAN BIRCH SENIOR CENTER

A multi-service activity center
for members 50 years of age and older



**Helping Area Seniors Over Age 50 Stay
Healthy, Active, and in the Community
for as Long as Safely Possible.**

Programs include but are not limited to:

- | | |
|--------------------------------------|-----------------------------------|
| Transportation | Line dancing |
| Nutrition (Hot lunches) | Health and Wellness |
| Ceramics/crafts | Exercise groups |
| Memory loss program | Group games |
| Bible study/hymn singing | Educational presentations |
| Grocery/emergency assistance program | Social service benefit assistance |
| Day and multi-day trips/excursions | |

Open Monday - Thursday 8:30 am to 4:00 pm,
Friday 8:30 am to 3:00 pm

Call **302-378-4758** to request additional information

300 S. Scott Street, Middletown, DE 19709
MOTSeniorCenter.com

A United Way Member Agency!



Follow us on Facebook
MOTSeniorCenter

MACC MEMBER SERVICES DIRECTORY

BLUE LISTINGS DESIGNATE A
MACC PREMIERE MEMBER

ACCOUNTING & TAX PREPARATION

AC TAX GROUP, LLC

Town of Whitehall
801 Mapleton Ave.
Middletown, DE 19709
1-844-378-1040
Austin Crissman

AKA ADVISORY, LLC

1701 Shallcross Ave, Ste D
Wilmington, DE 19806
(302) 230-7171
Brian Moreau, CPA, CFE

BELFINT, LYONS & SHUMAN, P.A.

1011 Centre Rd., Ste 310
Wilmington, DE 19805
(302) 225-0600
Stephen Ritchie, CPA

CT LEDGER LLC

104 Willow Grove Mill Drive
Middletown, DE 19709
(302) 438-6957
Christopher Thompson

HORTY & HORTY, P.A.

503 Carr Road, Suite 120
Wilmington, DE 19809
(302) 652-4194
Doug Phillips

MARKETING RESEARCH SYSTEMS LLC

1231 Gwynedd Dr
Middletown, DE 19709
(703) 801-6787
Valarie Hamilton

SAVANT WEALTH MANAGEMENT

272 Carter Drive, Suite 110
Middletown, DE 19709
(302) 378-4644
Ron Vascik, CPA

SC ASSOCIATES, INC.

651 North Broad St., Suite 103
Middletown, DE 19709
(302) 454-1100
Sharron Cirillo

STEPHANO SLACK LLC

2711 Centerville Road, Suite 101
Wilmington, DE 19808
(302) 777-7400
Richard Skinner

WATTAY ACCOUNTING

3488 S. DuPont Blvd.
Smyrna, DE 19977
(302) 724-9237
Adam Wattay

ADVERTISING

VIAMARK ADVERTISING

651 N Broad St., Suite 106
Middletown, DE 19709
(302) 660-2136
Katie Falkowski

HOT GRAPHICS PLUS

14 Spring Arbor Dr.
Middletown, DE 19709
(201) 394-8827
Dom Albi

LOCAL LIFE MARKETING GROUP

125 Rickey Blvd., #1253
Bear, DE 19701
(877) 514-4052
Robert Greenawalt

THE DYNAMIC MARKETING INSIGHTS GROUP, INC.

THE DMI GROUP
364 East Main Street, Suite 411
Middletown, DE 19709
(302) 223-9448
Carl Pace

ADVERTISING / MAGAZINE

OUT & ABOUT MAGAZINE

307 A Street
Wilmington, DE 19801
(302) 655-6483
Gerald DuPhily

TODAY MEDIA/DELAWARE TODAY/ DELAWARE BUSINESS TIMES

1000 N. West St., Suite 601
Wilmington, DE 19801
(302) 656-1809
Charlie Tomlinson

ADVERTISING / PRINTING

STAM PROMOTIONAL MARKETING

1108 Country Berry Ct.
Middletown, DE 19709
(302) 378-4332
Wendy Stam

AIRPORT

SUMMIT AVIATION, INC.

P.O. Box 258
Middletown, DE 19709
(302) 834-5400
Joyce Morales

APARTMENTS

THE RESERVE AT WESTOWN

500 Westown Way
Middletown, DE 19709
(302) 525-4580
Jessica Lazartic

APPLIANCE REPAIR

VENTURA APPLIANCE REPAIR

635 Cannery Lane, Suite D
Townsend, DE 19734
(302) 388-6316
Scott Ventura

ARCHITECTURAL FIRM

R G ARCHITECTS, LLC

200 West Main Street
Middletown, DE 19709
(302) 376-8100
Robert Grove

AUTO REPAIR

SCOTTI MUFFLER OF MOT

308 A West Main Street
Middletown, DE 19709
(302) 378-9247
Lyn Limpert

AUTOMOTIVE REPAIR, PARTS AND SERVICE

DIAMOND TOWN TIRE AND AUTO CARE

5221 Summit Bridge Rd.
Middletown, DE 19709
(302) 464-1077
James Barnes

FRED DRAKE AUTOMOTIVE

4195 Dupont Pkwy.
Townsend, DE 19734
(302) 378-4877
Kiel Drake

SCOTTI MUFFLER OF MOT

308 A West Main Street
Middletown, DE 19709
(302) 378-9247
Lyn Limpert

BAKERY

PRETZEL PLUG LLC

DBA Philly Pretzel Factory
9 W Main Street
Middletown, DE 19709
(267) 974-3105
Angela White

BANKING

AMERICAN SPIRIT FEDERAL CREDIT UNION

98 Sandhill Drive
Middletown, DE 19709
(302) 464-4067
Maurice Dawkins

ARTISANS' BANK

2961 Centerville Road
Wilmington, DE 19808
(302) 658-6881
Jennifer Paige

FIRST CITIZENS COMMUNITY BANK

4900 Kirkwood Highway
Wilmington, DE 19808
(302) 250-4028
Christine Menser

FULTON BANK

468 West Main St.
Middletown, DE 19709
(302) 378-4575
Harry Higgins

M & T BANK

405 W Main St
Middletown, DE 19709
(302) 449-2780
Michael Pinkston II

PNC BANK

460 West Main St.
Middletown, DE 19709
(302) 378-4442
Michael Herbert

SHORE UNITED BANK

102 Sleepy Hollow Drive, Suite 204
Middletown, DE 19709
(302) 449-6320
Brenda Schmidt

WSFS BANK

400 East Main Street
Middletown, DE 19709
(302) 449-5170
Karolyn Nagel

BANQUET FACILITIES

MIDDLETOWN MEMORIAL HALL

27 West Green St.
Middletown, DE 19709
(302) 737-6933
Theresa Ventresca

THE EDGE 18

1 Wittington Way
Middletown, DE 19709
Valerie Gooding

**THE EXECUTIVE BANQUET AND
CONFERENCE CENTER**

205 Executive Drive
Newark, DE 19702
(302) 731-1800
Annemarie Harrison

BEAUTY**JJSTYLE302**

49 West Main St
Middletown, DE 19709
(302) 650-4566
Jennifer Jones

**MARY JAMIESON-
MARY KAY INDEPENDENT
SALES DIRECTOR**

401 Ketch Lane
Middletown, DE 19709
(302) 376-1065
Mary Jamieson

REFRESH AESTHETICS

5236 Summit Bridge Road
Middletown, DE 19709
(607) 743-9354
Rachel Reynolds

BROADCASTING**IHEARTMEDIA**

920 West Basin Road, Suite 400
New Castle, DE 19720
(856) 840-9119

**BUSINESS &
PROFESSIONAL SERVICES****GRAY BREAKTHROUGHS, LLC**

204 W Pembrey Drive
Wilmington, DE 19803
(302) 468-7559
Carrie Gray

ADAMS HEALTH SOLUTIONS

17 Palmer Drive
The Legends
Middletown, DE 19709
(302) 222-4459
Rob Adams

APOTHIC REVENUE RESOURCES, LLC

651 N. Broad St., Suite 106
Middletown, DE 19709
(302) 261-5519
John Eldridge

**HELPING ONE MORE
ENTREPRENEUR**

108 Patriot Drive, Suite A
Middletown, DE 19709
(302) 261-3530
Joseph Richichi

**DELAWARE DIVISION OF
SMALL BUSINESS**

99 Kings Highway
Dover, DE 19901
(302) 739-4271
Andrea Wojcik

**DELAWARE PROSPERITY
PARTNERSHIP**

1007 N. Orange Street, Suite 731
Wilmington, DE 19801
(302) 477-7497
Kurt Foreman

JC COLLABORATIVE LLC

1270 Caldwell Corner Road
Townsend, DE 19734
(302) 743-7657
Jessica Cannavo

**KREATIV DIAMOND STATE
RECRUITING INC.**

298 E Main St. #610
Middletown, DE 19709
(302) 332-7538
Krystal Moerdyk

OFFICE SERVICE SOLUTIONS, INC.

710 Wilmington Rd, Ste. A
New Castle, DE 19720
(302) 327-8047
Asher Please

STEPHANO SLACK LLC

2711 Centerville Road, Suite 101
Wilmington, DE 19808
(302) 777-7400
Richard Skinner

TITAN LEGACY GROUP

651 North Broad Street, Suite 106
Middletown, DE 19709
(302) 420-3741
Chuck Boyce

**CABLE / HSI &
PHONE PROVIDER****BREEZELINE**

330 Drummer Drive
Grasonville, MD 21638-1204
(443) 425-9770
John Dec

COMCAST

110 Springbrooke Blvd.
Aston, PA 19014
(610) 499-2236
Jessica Sibley

CAR WASH**WHICH WASH INC**

dba Diamond Car Wash
104 Sandhill Dr.
Middletown, DE 19709
(302) 449-5896
Todd Whichard

CATERING**GOLDEN APPLE CATERERS, LLC**

27 West Green St.
Middletown, DE 19709
(302) 737-6933
Theresa Ventresca

IN JEST EVENTS & CATERING

212 Murrury Road
Newark, DE 19711
(302) 213-3683
Sarah Winnington

SHERM'S CATERING

913 Brandywine Blvd
Wilmington, DE 19809
302-607-7200
Renee Porter

CHAMBER OF COMMERCE**MIDDLETOWN AREA
CHAMBER OF COMMERCE**

651 N Broad St., Suite 106
Middletown, DE 19709
(302) 378-7545
Michelle Hummel

**CECIL COUNTY CHAMBER
OF COMMERCE**

216 E. Pulaski Hwy, Suite 120
Elkton, MD 21921
(410) 392-3833
Megan McRay

**CENTRAL DELAWARE
CHAMBER OF COMMERCE**

435 N. DuPont Hwy.
Dover, DE 19901
(302) 734-7513
Judy Diogo

**DELAWARE SMALL
BUSINESS CHAMBER**

11F Liberty Plaza
Newark, DE 19711
(302) 482-2120
Bob Older

**DELAWARE STATE
CHAMBER OF COMMERCE**

1201 North Orange St.
Wilmington, DE 19801
(302) 655-7221
Chuck James

**NEW CASTLE COUNTY
CHAMBER OF COMMERCE**

920 Justison St.
Wilmington, DE 19801
(302) 737-4343
Mark Kleinschmidt

CHILD CARE**DUCKLINGS EARLY
LEARNING CENTER**

Middletown South
760 Levels Road
Middletown, DE 19709
Courtney Hernandez

**BEACH BABIES CHILDCARE
AT TOWNSEND**

6020 Summit Bridge Road
Townsend, DE 19734
(302) 378-4778
Thomas Toner

BRIGHT FUTURES, INC.

125 Sleepy Hollow Drive
Middletown, DE 19709
(610) 905-0506
Jessica Estep

DUCKLINGS ELC MIDDLETOWN

621 Mapleton Ave
Middletown, DE 19709
(302) 676-7410
Bryan Bookout

**HAPPY PLACE CHILDCARE
OF MIDDLETOWN**

100 Patriot Drive
Middletown, DE 19709
(302) 449-3311
Anna Tawfik

CHIROPRACTIC**PURE WELLNESS**

708 Ash Blvd, Suite 302
Middletown, DE 19709
(302) 449-0149
Holly Corbett

CAMP CHIROPRACTIC, INC.

272 Carter Dr., Suite 120
Middletown, DE 19709
(302) 378-5110
Trevor Ennis

**DELAWARE BACK PAIN &
SPORTS REHABILITATION
CENTER**

124 Sleep Hollow Road, 204
Middletown, DE 19709
(302) 832-8894
Sean Bakst

DELAWARE INTEGRATIVE HEALTHCARE

421 E. Main St., Ste. 6
Middletown, DE 19709
(302) 376-5830
Trevor Ennis

MIDDLETOWN CHIROPRACTIC

12 Pennington St, Ste 200
Middletown, DE 19709
(302) 316-5858
Vincent Adofoli

ZWEIACHER CHIROPRACTIC

100 South Main Street, Suite 218
Smyrna, DE 19977
(302) 653-1188
Greg Zweischer, DC

CLEANING & RESTORATION**ACM CLEANROOM SERVICES**

3250 South Susan Street, Suite A
Santa Ana, CA 92704
1-800-649-4625
Daniel Brandt

ALL RESTORED INC.

116 Sarah Circle, Ste B
Wyoming, DE 19934
(302) 697-7810
Dallas Glass

BELFOR PROPERTY RESTORATION

229 Lake Dr
Newark, DE 19702
(302) 535-4351
Jason Pinder

DAMAGE CONTROL SOLUTIONS LLC

2 Bristle Cone Drive
Middletown, DE 19709
(302) 545-6973
Harry Hamalak

DIBIASO'S CLEANING & RESTORATION SERVICE

P.O. Box 43
Townsend, DE 19734
(302) 376-7111
Denise DiBiao

GO GREEN CLEANERS

400 W. Main Street
Middletown, DE 19709
(302) 464-6020
Bryan Scruggs

JAN-PRO FRANCHISE DEVELOPMENT OF NEW CASTLE

2417 Lancaster Ave.
Wilmington, DE 19805
(302) 324-5240
Khristian Toolan

PAUL DAVIS RESTORATION OF NORTHERN DELAWARE

118 Sleepy Hollow Dr., Suite 1
Middletown, DE 19709
(302) 449-6941
Mike Aruanno

SERVPRO OF DOVER/ MIDDLETOWN

712 Main Street
Cheswold, DE 19964
(302) 735-9940
Joe Lovell

CLEANING SERVICE**DDS CLEANING LLC (DBA DELAWARE CLEANING SERVICE)**

15 Winburne Dr
New Castle, DE 19720
(302) 498-9218
John Dorantes

DELAWARE TRASH CAN CLEANING

3115 Frazer Rd
Newark, DE 19702
(302) 310-9075
Tyler LeBlanc

JAN-PRO FRANCHISE DEVELOPMENT OF NEW CASTLE

2417 Lancaster Ave.
Wilmington, DE 19805
(302) 324-5240
Khristian Toolan

COLLEGE OR UNIVERSITY**DELAWARE TECHNICAL COMMUNITY COLLEGE**

506 N. Cass Street
Middletown, DE 19709
(302) 259-6316
Chris Moody

UNIVERSITY OF DELAWARE- CONFERENCE CENTER

John M. Clayton Hall
100 David Howell Dr.
Newark, DE 19716
(302) 831-2886
Cathy Matthews

COMPUTER AND TECHNOLOGY**WE KNOW CYBER, INC.**

1517 East Matisse Drive
Middletown, DE 19709
(888) 904-7011
Mike Willburn

ADOBE

345 Park Avenue
San Jose, California 95110-2704
(408) 753-5826
Ellen Sartin

AFFORDABLE BUSINESS SYSTEMS, INC.

8662 Ocean Highway
Delmar, MD 21875
(410) 742-2234
Dan O'Brien

CONCRETE CONSTRUCTION**CIPOLLONI CONCRETE LLC**

879 Black Diamond Road
Smyrna, DE 19977
(302) 449-0960
Brande Cipolloni

CONSTRUCTION**LUPOLI HOME IMPROVEMENTS**

28 Kirkcaldy Lane
Middletown, DE 19709
(302) 416-2948
Al Lupoli

ALPHA TO OMEGA PRECISION INDUSTRIAL MAINTENANCE, INC.

113 Patriot Drive, Suite 2
Middletown, DE 19709
(443) 466-9080
Michael Piemontese

BENCHMARK BUILDERS

818 First State Blvd.
Wilmington, DE 19804
(302) 995-6945
Irene Pulgini-Blair

BEVANS HOME IMPROVEMENT LLC

114 E Cochran Street
Middletown, DE 19709
(302) 740-7276
Celeste & Anthony Bevans

CIPOLLONI CONCRETE LLC

879 Black Diamond Road
Smyrna, DE 19977
(302) 449-0960
Brande Cipolloni

JS HOMES**HIGHLANDS AT BACK CREEK**

129 Ayshire Drive
Middletown, DE 19709
302-838-8880 x 701
Bob Taylor

KRM CONSTRUCTION COMPANY LLC

913 Washington Avenue
Chestertown, MD 21620
(410) 810-1393
John Johannsen

MOT ROOFING LLC

651 N Broad St., Suite 106
Middletown, DE 19709
302-598-9717
Lisa Poore

NOWLAND ASSOCIATES, INC.

2009 Ogletown Road
Newark, DE 19711
(302) 731-1333
Business Development

MPC-MAYSE PAINTING & CONTRACTING

213 Clydia Court
Middletown, DE 19709
(302) 388-1747
Pamela Mayse

CREDIT UNION**DEL-ONE FEDERAL CREDIT UNION**

270 Beiser Blvd
Dover, DE 19904
(302) 739-4496
Michelle Bergold

DEXSTA FEDERAL CREDIT UNION

110 Sandhill Drive
Middletown, DE 19709
(302) 285-1003
Lindsey Nagowski

DOVER FEDERAL CREDIT UNION

330 Dove Run
Middletown, DE 19709
302-678-8000
Sue Yocum

CUSTOM MACHINE EMBROIDERY**SEW THERE EMBROIDERY**

188 Green Giant Rd.
Townsend, DE 19734
(302) 545-0127
Becky Cronin

DELIVERY, TAKE OUT OR CURBSIDE TO GO RESTAURANT**CANTWELL'S TAVERN**

109 Main St.
Odessa, DE 19730
(302) 376-0600
Megan Saona

CROOKED HAMMOCK BREWERY - LAVIDA HOSPITALITY

316 Auto Park Dr
Middletown, DE 19709
(302) 644-7837
Emily Fitzgerald

CROW FARM-VINEYARD & WINERY

12441 Vansants Corner Road
 Kenndyville, MD 21645
 (302) 304-0551
 Judy Crow

HAAGEN-DAZS OF MIDDLETOWN

7 W Main Street
 Middletown, DE 19709
 1-302-223-2889
 James Henry

DENTISTRY**COOK FAMILY DENTISTRY, P.A.**

12 Pennington St., Ste.300
 Middletown, DE 19709
 (302) 378-4416
 Megan L. Cook DMD

DENTAL ASSOCIATES OF DELAWARE

106 St. Anne's Church Road
 Middletown, DE 19709
 (302) 378-8600
 Lindsay Schoppert

DENTISTRY IN MIDDLETOWN

232 Dove Run Centre Dr
 Middletown, DE 19709
 (302) 449-6810
 Jake Uram

MIDDLETOWN FAMILY DENTISTRY

122 Sandhill Dr., Suite 101
 Middletown, DE 19709
 (302) 376-9159
 Scott Arrighi

SMYRNA PEDIATRIC DENTISTRY

51 Huntfield Dr, Suite 100
 Smyrna, DE 19977
 (302) 508-0037
 David Delgado

DESIGN SERVICES**LAUNCH DESIGN COLLECTIVE**

2113 Keysville Frederick Co Rd
 Keymar, MD 21757
 (610) 416-8440
 Paul Dolan

EDUCATION**APPOQUINIMINK SCHOOL DISTRICT**

313 South Fifth Street
 Odessa, DE 19730-4010
 (302) 376-4128
 Lynne Reiter-Truby

DEFENSIVE TRAINING SOLUTIONS

1009 Blackbird Landing Road
 Townsend, DE 19734
 (302) 293-2218
 Nicole Hughes

DRAMA KIDS OF WILMINGTON AND DELCO

1151 S Olmsted Parkway
 Middletown, DE 19709
 (302) 893-7118
 Courtney Clarke

MATHNASIUM OF MIDDLETOWN

578 West Main Street
 Middletown, DE 19709
 (302) 449-7053
 Amar Tailor

ST. ANDREW'S SCHOOL OF DELAWARE

350 Noxontown Road
 Middletown, DE 19709
 (302) 378-9511
 Allie Sethman

ST. ANNE'S EPISCOPAL SCHOOL

211 Silver Lake Rd.
 Middletown, DE 19709
 (302) 378-3179
 Danielle Cummins

THE FINER POINTS

33340 Galena Sassafras Road
 Galena, MD 21635
 (339) 440-1385
 Presilah Davis

UNIVERSITY OF DELAWARE-CONFERENCE CENTER

John M. Clayton Hall
 100 David Howell Dr.
 Newark, DE 19716
 (302) 831-2886
 Cathy Matthews

ELDER RESOURCES**FREEDOM CENTER FOR INDEPENDENT LIVING, INC.**

105 Sleepy Hollow Drive, Ste. A
 Middletown, DE 19709
 (302) 376-4399
 Jody Hougentogler

HARMONY AT GLASGOW

2530 Old County Road
 Newark, DE 19702
 (302) 502-1901
 Michelle Hood
 Elder Resources

THE DELAWARE ELDER LAW CENTER

3711 Kennett Pike, Suite 110
 Wilmington, DE 19807
 (302) 300-4390
 W. Wade Scott

ELECTRICAL CONTRACTING**ATR ELECTRICAL SERVICES, INC.**

14 Manassas Drive
 Middletown, DE 19709
 302-378-3708
 Tammy Mellen

BRIGHT LIGHT DESIGN CENTER

401 E. Marsh Lane, Suite 2
 Newport, DE 19804
 (302) 256-5578
 Elizabeth Aceret

ELECTRICAL INTEGRITY LLC

117 J and M Dr.
 New Castle, DE 19720
 (302) 388-3430
 Leta Siros

NICKLE ELECTRICAL COMPANIES

125 Ruthar Drive
 Newark, DE 19711
 (302) 453-4000
 Laura Massimini

PACE ELECTRICAL & GENERATOR SERVICES

105 Carson Dr
 Bear, DE 19701
 (302) 328-2600
 Mark Wood

SHURELINE ELECTRICAL

100 Artisan Drive
 Smyrna, DE 19977
 (302) 389-1114
 Tim Murray

TRIDENT ELECTRICAL SERVICES LLC

10 Gaynor Ct.
 Bear, DE 19701
 (302) 513-7676
 Anthony Jones

TRI-M GROUP, LLC

1050 Industrial Road, Suite 240
 Middletown, DE 19709
 (302) 376-0150
 Rob Anderson

WHITE EAGLE ELECTRIC, INC.

709 Guido Dr.
 Middletown, DE 19709
 (302) 378-3366
 Al Rutkowski

ELEVATOR REPAIR**KINETIC ELEVATOR, LLC**

117 Patriot Dr, Suite A
 Middletown, DE 19709 US
 (443) 521-7344
 Elizabeth Flumer

ENGINEERING**WOODIN & ASSOCIATES, LLC**

111 Patriot Drive, Suite D
 Middletown, DE 19709
 (302) 378-7300
 Denis Hulme

ENTERTAINMENT**BIRDIE'S LINKS AND DRINKS**

320 Auto Park Drive
 Middletown, DE 19709
 302-520-GOLF
 Dylan Hannum

PUTTERS PARADISE

130 Commerce Drive
 Middletown, DE 19709
 (302) 449-0320
 Mark Hall

SEA HORSE ADVENTURE LLC

140 Bohemia Vista Marina Drive
 Chesapeake City, MD 21915
 (302) 722-5095

WILMINGTON BLUE ROCKS

801 Shipyard Drive
 Wilmington, DE 19801
 (302) 472-5718
 Jason Estes

ENVIRONMENTAL CONSULTING**ENVIROSURE, INC.**

701 Industrial Drive
 Middletown, DE 19709
 (410) 920-2189
 Charles Chan

WATERSHED ECO

8176 Rosa Scott Road
 Edisto Island, SC 29438
 (302) 750-6595
 James McCulley

EXCAVATION / SITE WORK**MORGAN CREEK****GENERAL CONTRACTING LLC**

17 North Cox Street
 Middletown, DE 19709
 (302) 275-3128
 Eric Bradley

FARM MACHINERY DEALERSHIP

HOOBER, INC.

1130 Middletown Warwick Rd.
Middletown, DE 19709
(302) 378-9555
Mark Reichlin

FARMERS MARKET

DUTCH COUNTRY FARMER'S MARKET

701 N. Broad Street
Middletown, DE 19709
(302) 285-6871
Benjamin Cohen

FENCE & ELECTRIC GATE CONTRACTOR

PIERCE FENCE COMPANY

5751 N Dupont Hwy
Dover, DE 19901
(302) 674-1996
Zach Price

GUARDIAN FENCE COMPANY

4783 Summit Bridge Rd.
Middletown, DE 19709
(302) 449-5006
Terri Seemans

FINANCIAL & INSURANCE

RELIABLE FINANCIAL SOLUTIONS, LLC

125 West Abbey Drive
Townsend, DE 19734
(888) 891-3974
Richard Rutledge

FINANCIAL SERVICES

EDWARD JONES / ANTHONY JOHNSON, FINANCIAL ADVISOR

222 Carter Drive, Suite 104
Middletown, DE 19709
(302) 376-0283
Monica Buswell

EFFICIENT FRONTIER GROUP

4353 Summit Bridge Road
Middletown, DE 19709
(302) 378-9103
Evan Ward

GOOD LIFE FINANCIAL GROUP

104 Sleepy Hollow Dr.
Suite 203 - 2nd Flr.
Middletown, DE 19709
(302) 613-2964
Eric Janvier

INDEPENDENCE SQUARE ADVISORS

100 Talbot Blvd.
Chestertown, MD 21620
(410) 708-8904
Michael Nickerson

THE PEOPLES BANK

P.O. Box 210
Chestertown, MD 21620
(410) 778-3500
Meghan Livie

WATTAY ACCOUNTING

3488 S. DuPont Blvd.
Smyrna, DE 19977
(302) 724-9237
Adam Wattay

FIREPLACE SALES - INSTALLATION - SERVICE & REPAIR

FLAME-TECH

23 Southgate Blvd., Suite 103
New Castle, DE 19720
(302) 996-9250
Bill Buckley

FITNESS CENTER

BUTTERFLY EFFECT

415 E. Main Street
Middletown, DE 19709
(302) 278-4347
Walter Sellers

DONE DONE FITNESS

410 Diamond State Blvd
Suite A
Middletown, DE 19709
(302) 312-1890
Missy Muller

EVOLUTION GYMNASTICS, LLC

402 N. Cass Street, Suite 306
Middletown, DE 19709
(302) 374-0699
Bob Caravano

STEEL CITY FITNESS

600 N Broad St, Suite 1
Middletown, DE 19709
(302) 376-3060
Anthony Johnson

TR FIT CLUBS

117 Patriot Drive
Middletown, DE 19709
(302) 482-1226
Joseph Todd

FLOORING

CHARLES TYRE FLOORING INC.

24 West Green St.
Middletown, DE 19709
(302) 376-0472
Charles Tyre

FLOOR COVERINGS INTERNATIONAL OF MIDDLETOWN, DE

128 Patriot Drive, Unit 4
Middletown, DE 19709
(302) 208-5490
David Sisson

UNITED FLOORS INC.

368 East Main Street
Middletown, DE 19709
(302) 570-7405
Winston Rodriguez

FUNERAL HOME

DANIELS & HUTCHISON FUNERAL HOME

212 N. Broad St.
Middletown, DE 19709
(302) 378-3410
Robert C. Hutchison, JR.

SPICER-MULLIKIN FUNERAL HOMES & CREMATORY

275 East Main Street
Middletown, DE 19709
(302) 328-2213
Matthew Smith

GARDEN CENTER

BEST MATERIALS OF DELAWARE LLC

5093 Summit Bridge Road
Middletown, DE 19709
(302) 378-1231
Myles Bennett

WILLEY FARMS

4092 Dupont Parkway
Townsend, DE 19734
302-378-8441
Donna Cavender

GENERAL CONTRACTING

DAVID A. BRAMBLE, INC.

705 Morgnec Road
Chestertown, MD 21620
(410) 778-3023
Megan Owings

GOLF COURSE

ST. ANNE'S CLUB

1100 St. Anne's Blvd.
Middletown, DE 19709
(302) 268-8888
Jon Manis

ODESSA NATIONAL GOLF CLUB

1131 Fieldsboro Rd.
Townsend, DE 19734
(302) 464-1007
Dale Loeslein

GOVERNMENT AGENCY

EXPORT DELAWARE

820 N. French Street, 4th Floor
Apt 2N
Wilmington, DE 19801
(302) 577-8464
Emma Pautler

COUNCILMAN KEVIN CANECO - DISTRICT 12

Louis Redding City
County Building
800 N. French Street, 8th Floor
Wilmington, DE 19801
(302) 395-8372
Councilman Kevin Caneco

NEW CASTLE COUNTY COUNCIL

800 North French St., 8th Flr.
Wilmington, DE 19801
Karen Barlow

STATE OF DE, DEPT. OF LABOR, DIVISION OF VOC. REHAB.

122 Silver Lake Rd.
Middletown, DE 19709
(302) 696-3180
Denise Burke

STATE SENATOR NICOLE POORE

411 Legislative Ave.
Dover, DE 19901
(302) 373-0080
Alexa Adams

U.S. SMALL BUSINESS ADMINISTRATION

1105 Market Street
Lobby Level, Suite 02
Wilmington, DE 19801
(302) 573-6294 X221
Mike Rossi

HEALTH INSURANCE

FLEETWOOD INSURANCE GROUP

100 Talbot Ave
Chestertown, MD 21620
(917) 273-1442
Brett Davis

HEALTH & WELLNESS

CARDIOLOGY PHYSICIANS

Abby Medical Center
One Centurian Drive, Suite 200
Newark, DE 19713
(417) 849-5169
Michael Weeks

RESILIENT KIDS CHILD & FAMILY THERAPY

123 W Main St
Middletown, DE 19709
(302) 267-6491
Marissa Lloyd

ADVANCED FAMILY CARE

212 Carter Dr., Suite C
Middletown, DE 19709
(302) 314-6057
Flavee Banfield

ATLANTIC APOTHECARY, INC.

103 S. DuPont Blvd., Suite 2
Smyrna, DE 19977
653-9355
Brandy Street

**BAYHEALTH MEDICAL CENTER/
MIDDLETOWN MEDICAL CENTER**

209 E. Main St.
Middletown, DE 19709
(302) 378-1199
Kathy Seacord

**BLAU GROUP LLC DBA CLUB PILATES
WESTOWN
MIDDLETOWN**

1653 Lake Seymour Drive
Middletown, DE 19709
(845) 664-5661
Jessica Blau

**CANCER SUPPORT COMMUNITY
DELAWARE**

4810 Lancaster Pike
Wilmington, DE 19807
(302) 995-2850
Nicole Pickles

CREATIVE MEDICAL CONSULTING LLC

111 6th Street
S Dupont Highway
Odessa, DE 19730
(302) 313-1411
Stephanie Mitchell

DEDICATED TO WOMEN OB-GYN

209 E. Main St.
Middletown, DE 19709
(302) 389-4009
Jeffrey Coldiron

**DELAWARE BREAST CANCER
COALITION**

165 Commerce Way, Suite 2
Dover, DE 19904
(302) 672-6435
Stephanie Cumella

DELAWARE ORTHODONTIC

122 Sandhill Drive, Suite 201
Middletown, DE 19709
(302) 449-1350
Kathleen Pacana

DENTISTRY IN MIDDLETOWN

232 Dove Run Centre Dr
Middletown, DE 19709
(302) 449-6810
Jake Uram

FIRST STATE FAMILY PRACTICE, INC.

222 Carter Drive, Suite 101
Middletown, DE 19709
(302) 378-5494
John Kehagias, M.D.

FIRST STATE HEALTH & WELLNESS

103 Patriot Drive, Suite 105
Middletown, DE 19709
(302) 454-1010
Stacy Kelly

**HIMALAYAN SALT OF THE EARTH
CAVE LLC**

10 W. Main Street
Middletown, DE 19709
(302) 272-5410
Charles Ringgold

INFINITE INDOORS

5325 Newman Lane
Middletown, DE 19709
(610) 608-5678
Matthew Goldstein

**KEEP FINDING YOU -
LIFE COACHING**

116 Saddle Dr
Middletown, DE 19709
(302) 373-3232
Naomi Kreske

**MCCORMICK & ASSOCIATES
OF MIDDLETOWN**

5350 Summit Bridge Road, Ste 103
Middletown, DE 19709
302-449-0710
Caren Coffy-McCormick

**MIDDLETOWN FAMILYCARE
ASSOC. LLC**

114 Sandhill Drive, Suite 101
Middletown, DE 19709
(302) 378-4779
Guni Dedhia

MINT & NEEDLE

219 W Green Street
Middletown, DE 19709
(302) 696-2484
Brandi Gregge

NAMASTE FOR LIFE

22 W. Main Street
Middletown, DE 19709
(302) 740-1054
Reba Businsky

POSALITY LLC

456 Goodwick Drive
Middletown, DE 19709
(856) 528-6683
Patricia Favoreel

**PREMIER DERMATOLOGY &
COSMETIC SURGERY**

118 Sandhill Drive, Suite 104
Middletown, DE 19709
(302) 633-7550
Nicole Drolet

**SMYRNA PEDIATRIC
DENTISTRY**

51 Huntfield Dr, Suite 100
Smyrna, DE 19977
(302) 508-0037
David Delgado

**SUNWISE FAMILY DERMATOLOGY
& SURGERY**

Suite: 203, 102 Sleepy Hollow Drive
Middletown, DE 19709
(302) 364-2000
Jim LaRusso

TKS NUTRITION, LLC

244 Manchester Way
Middletown, DE 19709
(302) 897-2088
Tracey Sinibaldi

TR FIT CLUBS

117 Patriot Drive
Middletown, DE 19709
(302) 482-1226
Joseph Todd

WESTOWN DENTAL

820 Kohl Ave.
Middletown, DE 19709
(302) 314-3110
Tania Glidden

WESTSIDE FAMILY HEALTHCARE

300 Water St., Suite 200
Wilmington, DE 19801
(302) 656-8292
Sara Dempsey

HOME BUILDER**JS HOMES
HIGHLANDS AT BACK CREEK**

129 Ayshire Drive
Middletown, DE 19709
302-838-8880 x 701
Bob Taylor

HOME CARE**GRISWOLD HOME CARE FOR
NEW CASTLE COUNTY**

5145 W. Woodmill Drive, Suite 22
Wilmington, DE 19808
(302) 456-9904
Patrick Gray

HOME IMPROVEMENT**HELLINGS KITCHENS & BATHS**

225 W. Main Street
Middletown, DE 19709
(302) 374-0000
Stephanie Gore

**MIDDLETOWN KITCHEN
AND BATH, LLC**

111 Patriot Drive, Unit C
Middletown, DE 19709
(302) 464-1236
Mark Gandy

BEVANS HOME IMPROVEMENT LLC

114 E Cochran Street
Middletown, DE 19709
(302) 740-7276
Celeste & Anthony Bevans

BRIGHT HOME DELAWARE

543 Diamond Drive
Middletown, DE 19709
(302) 864-2121
Carl Zitofsky

BROBST HOME IMPROVEMENTS LLC

5909 Summit Bridge Road
Townsend, DE 19734
302-376-1656
Matthew Brobst

CERTAPRO PAINTERS OF DELAWARE

405 Old DuPont Rd.
Wilmington, DE 19804
(302) 212-5742
Denise Garvey

COOLVU OF NEW CASTLE COUNTY

177 Green Forest Drive
Middletown, DE 19709
(302) 803-3436
Sheena Gladden

METICULOUS BLINDS LLC

849 Bullen Drive
Middletown, DE 19709
(302) 609-5077
Hina and Bill Gondal

SCREEN MASTERS

303 Holly Lane
Middletown, DE 19709
(302) 293-9151
Shawn Tiller

**SUNDANCE KITCHEN, BATHS
& EXTERIORS**

816 Kohl Ave
Middletown, DE 19709
(302) 793-9352
Jason Stanley

HUMAN RESOURCES CONSULTING & CAREER PLANNING SERVICES

ELM STRATEGIES

202 Drawyers Dr.
Middletown, DE 19709
(302) 250-6032
Sital Soni

KREATIV DIAMOND STATE RECRUITING INC.

298 E Main St. #610
Middletown, DE 19709
(302) 332-7538
Krystal Moerdyk

HVAC SERVICES

ABC HEATING LLC

119 Madrid Street
Townsend, DE 19734
(302) 668-9665
Kim Burghart

AIRE SERV HEATING & AIR

134B Sandy Dr.
Newark, DE 19713
(302) 330-8409
Sarah Boyce

BENDLER HEATING AND COOLING LLC

4569 Summit Bridge Rd
Middletown, De 19709
(302) 299-8520
Nicole Bendler

BLUE HEN MECHANICAL

119 Sleepy Hollow Dr.
Middletown, DE 19709
(302) 598-5094
David P. Harwell

CHRISTIANA MECHANICAL, INC.

109 A Sleepy Hollow Dr.
Middletown, DE 19709
(302) 378-7308
Terri Sill

HONEST HEATING & COOLING LLC

P.O. Box 271
Saint Georges, DE 19733
(302) 836-9567
Lawrence Bias

SERVICE UNLIMITED, INC.

19 Southgate Boulevard
New Castle, DE 19720
(302) 326-2665
Michael Matweychuck

WRIGHT DESIGN INC.

4714 N. Dupont Parkway
Townsend, DE 19734
(302) 464-1264
Jerry Wright

IMPORT/EXPORT

EIGHT INTERNATIONAL

610 Main Street
Odessa, DE 19730
(302) 261-2417
Suki Campano

HERBAL DISCOVERY LLC

1248 Hook Drive
Middletown, DE 19709
(802) 380-5012
Timothy Slate

INDIVIDUAL

BETHANY HALL-LONG

127 Saint Augustine Court
Middletown, DE 19709
(302) 378-8386
Bethany Hall-Long

ROXANE FERGUSON

2872 Avila Cross Circle #110
Oviedo, FL 32765
Roxane Ferguson

SENATOR STEPHANIE HANSEN

820 N French St, 11th Floor
Wilmington, DE 19801
(302) 740-4979
Anna Shields

WILL KIRKWOOD

199 Pine Tree Road
Townsend, DE 19734
(302) 378-4878
Will Kirkwood

INSURANCE

STATE FARM INSURANCE/ CHUCK MONTGOMERY

384 East Main Street
Middletown, DE 19709
(302) 449-0001
Chuck Montgomery

ANNE SCHARP INSURANCE INC

3925 Kirkwood Hwy
Wilmington, DE 19808
(302) 772-6520
Zachary Martinez

BLUE HEN INSURANCE, LLC

1050 Industrial Drive, Suite 240
Middletown, DE 19709
(302) 696-2242
Tom Hernan

BRANDON PHILLIPS, NEW YORK LIFE

121 Bakerfield Dr.
Middletown, DE 19709
(302) 609-6424
Brandon Phillips

COLONIAL LIFE BENEFITS

5626 Kirkwood Highway
Orchard Commons Business Center
Wilmington, DE 19808
(302) 235-3088
Robert Roth

COMMERCIAL INSURANCE ASSOCIATES

260 Chapman Rd., Suite 100-B
Newark, DE 19702
(302) 286-7901
Travis Mozert

CROW INSURANCE AGENCY

106 South Broad St.
Middletown, DE 19709
(302) 378-9592
Jules Hendrix

DELAWARE VALLEY MEDIGAP

651 N. Broad Street, Suite 106
Middletown, DE 19709
(302) 487-1961
John Egger

DIAMOND STATE FINANCIAL GROUP

900 Prides Crossing
Newark, DE 19713
(302) 366-0366
Neil Stalter, CFP®, ChFC®, RICP®,
CBEC®, CDFA®

FLEETWOOD INSURANCE GROUP

100 Talbot Ave
Chestertown, MD 21620
(917) 273-1442
Brett Davis

LIBERTY MUTUAL INSURANCE

131 Continental Drive, Suite 108
Newark, DE 19713
(302) 444-9108
Catherine (Kitty) Lyons

WHITE CLAY INSURANCE

630 Churchmans Rd., Suite 203
Newark, DE 19702
(302) 525-6720
Theodore Wolfer

WOLFF INSURANCE AGENCY INCORPORATED

520 People's Plaza
Newark, DE 19702
(302) 283-1880
Peter Wolff

INVESTMENT

EFFICIENT FRONTIER GROUP

4353 Summit Bridge Road
Middletown, DE 19709
(302) 378-9103
Evan Ward

LANDSCAPING

AMERICAN LANDSCAPE RENAISSANCE LLC

105 E Old Squaw Rd.
Middletown, DE 19709
(302) 632-4658
Kyle Lapinsky

BAILEY'S LAWN & LANDSCAPE LLC

5101 Summit Bridge Road
Middletown, DE 19709
(302) 376-9113
Daniel Bailey

BARTLETT TREE EXPERTS

108 Wedge Court
Townsend, De 19734
(302) 995-7562
Ron Kowalski

BRILLIANCE LANDSCAPING

202 Tralee Drive
Middletown, DE 19709
(410) 615-4252
Jarod Eaton

ROLLING FIELDS TREE FARM

13894 Golts Caldwell Rd
Galena, MD 21636
(443) 566-2887
Nicole Gannon

LAW FIRM

LAW OFFICE OF HEATHER A. LONG

501 Main Street
Odessa, DE 19730
(302) 466-5664
Heather Long

MORRIS JAMES

500 Delaware Avenue, Suite 1500
Wilmington, De 19801
(302) 888-6800

PARKWAY LAW, LLC

3171 DuPont Parkway, Suite B
Townsend, DE 19734
(302) 449-0400
Dominic Balascio

THE DELAWARE ELDER LAW CENTER

3711 Kennett Pike, Suite 110
Wilmington, DE 19807
(302) 300-4390
W. Wade Scott

TIGHE & COTTRELL, PA

5305 Limestone Road, Suite 200
Wilmington, DE 19808
(302) 658-6400
Melissa Rhoads

WOLFE & ASSOCIATES

122 Sandhill Drive, Suite 203
Middletown, DE 19709
(302) 644-1426
Lori Rapposelli

LIQUOR**KRESTON WINE & SPIRITS**

448 East Main St.
Middletown, DE 19709
(302) 376-6123
Robert Kreston

LODGING**MILLER-DUNHAM BED & BREAKFAST**

207 High Street
Odessa, DE 19730
(302) 378-0459
Christine Stoker

FAIRFIELD INN MIDDLETOWN

411 Merrimac Ave.
Middletown, DE 19709
Diane Gradel

HAMPTON INN

117 Sandhill Dr.
Middletown, DE 19709
(302) 674-2200
Sophia Kramedas

MANUFACTURING**DATWYLER**

571 Merrimac Avenue
Middletown, DE 19709
(302) 530-4054
Gregory Gyarmati

JUNIA HOLDINGS INC.

110 Sleepy Hollow Dr.
MIDDLETOWN, DE 19709
(302) 449-0199
Miki Edge

**MARKETING/
ADVERTISING SERVICES****IMARKETEUR**

364 E Main Street, Suite 139
Middletown, DE 19709
(610) 701-1442
Tara Mogan

**INSTANT IMPRINTS OF
DELAWARE**

62 Southgate Blvd, Suite A
New Castle, DE 19720
(302) 515-0207
Barbara Day

**THE DYNAMIC MARKETING
INSIGHTS GROUP, INC.
THE DMI GROUP**

364 East Main Street, Suite 411
Middletown, DE 19938
(302) 223-9448
Carl Pace

ZENBUSINESS

5511 Parkcrest Drive, Suite 103
Austin, TX 78731
(512) 765-4985

MARTIAL ARTS SCHOOLS**EVOLUTION KARATE
ACADEMY**

735 North Broad St.
Middletown, DE 19709
(302) 376-7100
Joe Kaluzny

CENTRAL MOVEMENT MARTIAL ARTS

108 Patriot Dr, Suite H
Middletown, DE 19709
(302) 449-0044
Rachel Kirk

MEDICAL**SOMA SKIN & SCULPT
MED SPA**

101 N. Broad St.
Middletown, DE 19709
(302) 219-6100

ADMIRE MEDICAL

114 Sandhill Drive, Suite 201
Middletown, DE 19709
(302) 592-4953
Lauren Watson

BLOOD BANK OF DELMARVA

100 Hygeia Dr
Newark, DE 19713
(302) 737-8405
Tony Prado

CEDAR SEE VISION CENTER, LLC

5435 Peterson Rd
Middletown, DE 19709
(302) 609-0041
Withney Korley

**NEOTERIC VITALITY PRIMARY
CARE AND AESTHETICS**

601 Tower Lane, Suite 100
Middletown, DE 19709
(302) 374-0308
Janika Wallace

**SUNWISE FAMILY DERMATOLOGY
& SURGERY**

Suite: 203, 102 Sleepy Hollow Drive
Middletown, DE 19709
(302) 364-2000
Jim LaRusso

MERCHANT SERVICES**MERCANTILE PROCESSING INC.**

32695 Roxana Rd.
Millville, DE 19967
(302) 524-8000
Casey Fitzgerald

MORTGAGE LENDING**MOVEMENT MORTGAGE**

200 Continental Dr, Ste 401
Newark, DE 19713
(302) 383-2118
Kelly Whitney

PIKE CREEK MORTGAGE

120 Airmont Dr.
Middletown, DE 19709
(302) 318-0903
Jamie England

THE MONEY STORE

225 Bohemia Ave, Unit 1
Chesapeake City, MD 21915
(203) 942-6240
Ryan Searles

MOVING & STORAGE**DELAWARE MOVING & STORAGE, INC.**

214 Bear Christiana Rd.
Bear, DE 19701
(302) 322-0311
Ed Kulesza

HOPKINS & SONS, INC.

1 Bellecor Dr.
New Castle, DE 19720
(302) 322-1017
Bryan Smallwood

SSW MOVING & JUNK REMOVAL

1201 N Market St, Suite 111
Wilmington, DE 19801
(302) 643-4006
Bobby Showmaker

MUNICIPALITY**THE TOWN OF MIDDLETOWN**

19 West Green St.
Middletown, DE 19709
(302) 378-2711
Kristen Krenzer

TOWN OF ODESSA

315 Main Street
Odessa, DE 19730
(302) 378-2510
Harvey C. Smith Jr

TOWN OF TOWNSEND

141 Main Street
Townsend, DE 19734
302-378-8082
Julie Goodyear

NETWORKING**TOASTMASTERS STANDING
OVATION CLUB**

651 N. Broad Street, Suite 106,
Middletown DE 19709
(302) 598-9903
Angela Herbstritt

**TRAILBLAZER WOMEN'S
NETWORK**

651 N. Broad Street, Suite 106,
Middletown DE 19709
(302) 378-7545

NEWSPAPER / PUBLISHING**DAILY STATE NEWS**

110 Galaxy Drive
Dover, DE 19901
(302) 674-3600
Jessica Cook

WOMEN'S JOURNAL

P.O. Box 57
Lewes, DE 19958
(888) 550-7200
Pam Rizzo

NEW HOME CONSTRUCTION**JS HOMES****HIGHLANDS AT BACK CREEK**

129 Ayshire Drive
Middletown, DE 19709
302-838-8880 x 701
Bob Taylor

NON-PROFIT**CORBIT-CALLOWAY
MEMORIAL LIBRARY**

115 High Street
P.O. Box 128
Odessa, DE 19730
(302) 378-8838
Katryna Cera-Proulx

**FIRST STATE BALLET
THEATRE**

818 Market Street
Wilmington, DE 19802
(302) 652-5503
Aynsley Inglis

**FIRST TEE - DELAWARE
ED OLIVER GOLF COURSE**

800 N. DuPont Road
Wilmington, DE 19807
(302) 384-8759
Leslie McGuigan

**YMCA OF DELAWARE-
MIDDLETOWN**

202 E. Cochran Street
Middletown, DE 19709
(302) 616-9622
Rich Berry

A DOOR OF HOPE

316 E. Main Street
Middletown Crossing III
Middletown, DE 19709
302-394-9500
Rhonda Silvestri

AMERICAN CANCER SOCIETY

37119 Saber Court
Greenbackville, VA 23356
(304) 694-4563
Ashley Riley

AMERICAN LEGION CANAL POST 25

510 American Legion Drive
Middletown, DE 19709
(302) 562-9665
David Strawbridge

APPOQUINIMINK FOUNDATION

118 S Sixth Street
Odessa, DE 19730
(302) 753-6301
Amar Tailor

AUTISM DELAWARE

924 Old Harmony Rd, Suite 201
Newark, DE 19713
302-224-6020
Dan Getman

**BETTER BUSINESS BUREAU
SERVING DELAWARE**

60 Reads Way
New Castle, DE 19720
(302) 221-5255
Christine Sauers

**CHRIST THE TEACHER
CATHOLIC SCHOOL**

2451 Frazer Road
Newark, DE 19702
(302) 438-2377
Beth Ann Oliphant

**COMMUNITY INTEGRATED
SERVICES**

18 West Main Street
Middletown, DE 19709
(302) 376-8259
Keith Bosco

**DD PROJECT WINES/ DD
ENTREPRENEURIAL FOUNDATION**

107 Lynn Circle
Middletown, DE 19709-9253
(302) 528-3485
Carla Briccotto

DEEP ROOTS, INC.

21 Veazey Cove Road
Earleville, MD 21919
(410) 275-2194

DELAWARE HOSPICE

630 Churchmans Road, Suite 200
Newark, DE 19702
(302) 478-5707
Kathleen Wood

DELAWARE SAFETY COUNCIL

2 Penns Way #201
New Castle, DE 19720
(302) 276-0660
Stacey Inglis

**DELAWARE SMALL BUSINESS
DEVELOPMENT CENTER**

1 Innovation Way, Suite 301
Newark, DE 19711
302-831-1555
Stephanie O'Leary

DELAWARE UNION SOCCER

PO Box 545
Middletown, DE 19709
(302) 235-3144
Tara O'Brien

**DELAWARE VETERANS SUPPORT
ASSOCIATION**

916 S. Broad Street
Middletown, DE 19709
(302) 602-1505
Irene Smith

**EASTERSEALS DELAWARE &
MARYLAND'S EASTERN SHORE, INC.**

61 Corporate Circle
New Castle, DE 19720
(302) 221-2053
Kelly Doty

EFFICIENCY SMART

123 Richards Lane
Newark, DE 19711
(302) 396-0169
Carolyn Dehory

FAMILY HELP INC.

PO Box 302
Middletown, DE 19709
(302) 597-8726
Shanda Watson

**FREEDOM CENTER FOR
INDEPENDENT LIVING, INC.**

105 Sleepy Hollow Drive, Ste. A
Middletown, DE 19709
(302) 376-4399
Jody Hougentogler

GRATEFUL ACRES, INC. NON-PROFIT

697 Vance Neck Rd
Middletown, DE 19709
1-302-464-8847
Allyson Kennedy

**GREATER WILMINGTON
CONVENTION & VISITORS
BUREAU**

100 West 10TH St., Suite #20
Wilmington, DE 19801
(302) 652-4088
Sarah Willoughby

**JOBS FOR DELAWARE
GRADUATES, INC.**

381 West North Street
Dover, DE 19904
(302) 734-9341
Nicole Poore

KENT SUSSEX INDUSTRIES

301 N. Rehoboth Blvd.
Milford, DE 19963
(302) 422-4014
Mark Reeve

**MIDDLETOWN BUSINESS
ASSOCIATES**

651 N. Broad Street, Suite 106,
Middletown DE 19709
(302) 766-0982
Katie Falkowski

**MIDDLETOWN HISTORICAL
SOCIETY, INC.**

216 North Broad St
Middletown, DE 19709
(302) 378-7466
Linda Harting

MIDDLETOWN MAIN STREET

216 N Broad Street
Middletown, DE 19709
(302) 378-2977
Kate Rokosz

**MIDDLETOWN-ODESSA-
TOWNSEND ROTARY CLUB**

P.O. Box 201
Middletown, DE 19709
(302) 378-1181
Ceil DeFazio

MOT SENIOR CENTER

300 S. Scott Street
Middletown, DE 19709
(302) 378-4758
Cecilia DeFazio

NEIGHBORHOOD HOUSE, INC.

811 North Broad Street, Suite 219
Middletown, DE 19709
(302) 378-7217
Tom Ward

**OUR DAILY BREAD DINING ROOM
OF MOT, INC.**

214 North Broad Street
Middletown, DE 19709
(302) 285-9540
Jennifer Atkinson

REAL LIFE COMMUNITY CHURCH

938 Middletown Warwick Rd
Middletown, DE 19709
(302) 378-6133
Deanna Pierce

**ROTARY CLUB OF SOUTHERN
NEW CASTLE COUNTY**

P.O. Box 91
Odessa, DE 19730
(302) 378-0159
Club President

SCORE DELAWARE

1105 Market St, Lobby Level 02
Wilmington, DE 19801
(302) 661-2366
William Roberson

**TOWNSEND FIRE CO. -
LADIES AUXILIARY**

107 Main St.
Townsend, DE 19734
(302) 378-8111
Michelle Argoe

UNIQUE BUSINESS SOLUTIONS

26 Airdrie Drive
Clairborne at Lexington Farms
Bear, DE 19701
(302) 750-0930
Jeanette Waters

VETERANS WATCHMAKER INITIATIVE

307 N. 6th Street
Odessa, DE 19730
(302) 465-2421
Sam Cannan

**WHY I LOVE JESUS-
SHARING MY FAITH STORY**

1322 Bayview Road
Middletown, DE 19709
(302) 378-7274
Nancy Carol Willis

NON-PROFIT / CHURCH**VETERAN'S OUTREACH
MINISTRIES**

3021 Old County Road
Newark, DE 19702
(302) 229-1819
Thomas Hogate

**CONNECTION COMMUNITY
CHURCH**

4744 Summit Bridge Road
Middletown, DE 19709
(302) 378-7692
Alan Jones

EL SHADDAI CHRISTIAN MINISTRIES INC.

311 Joan Drive
Bear, DE 19701
(302) 761-3286
Pastor Glenn Ahrens

MARKINC MINISTRIES

PO Box 7147
Newark, DE 19714
(302) 838-2755
Danielle Cantler

REAL LIFE COMMUNITY CHURCH

938 Middletown Warwick Rd
Middletown, DE 19709
(302) 378-6133
Deanna Pierce

OFFICE & WAREHOUSE RENTAL**DELAWARE INDUSTRIES, INC.**

9 Wood St.
Middletown, DE 19709
(302) 378-8974
Judy Walls

OFFICE EQUIPMENT, SALES & SERVICE**EXCEL BUSINESS TECHNOLOGIES**

201 Ruthar Dr., Suite 10
Newark, DE 19711
(302) 453-1500
Mike Stypinski

OPTOMETRY & OPTICAL**CEDAR SEE VISION CENTER, LLC**

5435 Peterson Rd
Middletown, DE 19709
(302) 609-0041
Withney Korley

DELAWARE OPHTHALMOLOGY CONSULTANTS

272 Carter Dr., Suite 100
Middletown, DE 19709
(302) 479-3937
Sandy Fasano

SIMON EYE

472 East Main St.
Middletown, DE 19709
(302) 239-1933
Tina Satterfield

ORTHODONTICS**ANZILOTTI ORTHODONTICS-CLIFFORD L. ANZILOTTI, DMD PA**

112 St. Anne's Church Rd.
Middletown, DE 19709
(302) 378-2778
Kathie Graham

DELAWARE ORTHODONTIC

122 Sandhill Drive, Suite 201
Middletown, DE 19709
(302) 449-1350
Kathleen Pacana

PAINTING**THAT 1 PAINTER MIDDLETOWN**

742 Dexter Corner Rd
Townsend, DE 19734
(302) 332-8960
Andrew Pudimott

CERTAPRO PAINTERS OF DELAWARE

405 Old DuPont Rd.
Wilmington, DE 19804
(302) 212-5742
Denise Garvey

PAINT DOCTOR INC.

99 Albe Dr., Suite A
Newark, DE 19702
(302) 454-6400
Stacy Edwards

MPC-MAYSE PAINTING & CONTRACTING

213 Clydia Court
Middletown, DE 19709
(302) 388-1747
Pamela Mayse

PAYROLL SERVICES**PURSERS OFFICE INC.**

1050 Industrial Drive, Suite 110
Middletown, DE 19709
(302) 239-9788
Rollyn Trueblood

PEST MANAGEMENT**ACTIV PEST SOLUTIONS**

651 N. Broad Street, Suite 106
Middletown, DE 19709
(302) 645-1502
Sean McMahon

HOFFMAN'S EXTERMINATING

5169 Summit Bridge Road, Unit 2
Middletown, DE 19709
(302) 836-5445
Sonny Pacana

PET SERVICES**THE DOG STOP OF MIDDLETOWN**

108 Sleepy Hollow Drive
Middletown, DE 19709
(302) 376-9006
Jim Henry

PHOTOGRAPHY**JASON A. BLEECHER, PHOTOGRAPHER**

239 Academy Lane
Middletown, DE 19709
(717) 278-6000
Jason Blecher

302 MEDIA, LLC

8 The Green, Suite 7584
Dover, DE 19709
(302) 535-4268
Mike Windley

ANDREAS STAHL PHOTOGRAPHY

100 Tuscany Dr
Middletown, DE 19709
(302) 563-5394
Andreas Stahl

BOB GOSSELIN PHOTOGRAPHY

213 Lime Landing Rd.
Millington, MD 21651
(410) 604-1195
Bob Gosselin

JANE MRUK PHOTOGRAPHY

115 S. Sixth Street, Suite #4
Odessa, DE 19730
(302) 668-9141
Jane Mruk

SWAG360 ENT LLC

1201 N. Market Street, Suite 111
Wilmington, DE 19801
(302) 582-8719
Curtis Mack

PHYSICAL THERAPY**ALL THERAPY PHYSICAL THERAPY & WELLNESS**

101 North Broad Street
Middletown, DE 19709
(302) 376-5578
Nicholas Ryan

PREMIER PHYSICAL THERAPY & SPORTS PERFORMANCE

210 Cleaver Farm Rd., Suite 1
Middletown, DE 19709
(302) 449-2048
Jen Atwood

THRIVE PHYSICAL THERAPY

834 Kohl Ave.
Middletown, DE 19709
(302) 834-8400
Carolyn Calvey

TOP TIER PHYSICAL THERAPY

128 Patriot Drive, Unit 5
Middletown, DE 19709
(302) 824-5397
Brad Logue

PLUMBING**CLARKS PLUMBING**

306 Ellenwood Drive
Middletown, DE 19709
(443) 485-7336
Brandon Clark

PRESSURE WASHING**BRIGHT HOME DELAWARE**

543 Diamond Drive
Middletown, DE 19709
(302) 864-2121
Carl Zitofsky

CASEPRO LLC COMMERICAL POWER WASH

36 E. Sarazen Drive
Middletown, DE 19709
(302) 561-7031
Ernest Frazier

SCREEN MASTERS

303 Holly Lane
Middletown, DE 19709
(302) 293-9151
Shawn Tiller

PRINTING**DELMARVA PRINTING CO.**

2110 Windsor Drive
Salisbury, MD 21801
(410) 912-0980
Don Hitchens

PRINTING & MAILING**COLORTEC PRINTING AND MAILING LLC**

521 Irish Hill Rd, Ste B
Runnemede, NJ 8078
(856) 767-0108
Lori Burroughs

THE UPS STORE

364 E Main Street
Middletown, DE 19709
(302) 222-8910
Thomas Lushbaugh

PRINTING & MAILING SIGNS**ALPHAGRAPHS - BEAR**

140 Fox Hunt Dr
Bear, DE 19701
(302) 353-4400
Ujval Shah

PROPERTY MANAGEMENT**STANLEY PROPERTIES, LLC**

PO Box 267
Odessa, DE 19730
(302) 376-8800
Carolyn Stanley

ASSET MANAGEMENT ALLIANCE

909 Delaware Ave
Wilmington, DE 19806
302-655-2100
Rachael Odle

DELAWARE PREMIER PROPERTY MANAGEMENT, LLC
PO Box 191
Townsend, DE 19734
(302) 355-1880
Christina Quinn

DSM COMMERCIAL
3304 Old Capitol Trail
Wilmington, DE 19808
(302) 283-1800
Accounts Payable

SECURE MANAGEMENT, INC.
1050 Industrial Drive, Suite 100
Middletown, DE 19709
(302) 999-8342
Diane Kowalski

REAL ESTATE

COMPASS REAL ESTATE
525 Gum Bush Rd
Townsend, DE 19734
(302) 584-3279
Candice Santoro

**THE MEGAN AITKEN TEAM,
KELLER WILLIAMS REALTY**
401 E. Main St., Suite B, Bldg 4
Middletown, DE 19709
(302) 528-9124
Megan Aiken

**ANDREA HARRINGTON &
ASSOCIATES -
COMPASS REAL ESTATE**
240 Dove Run Centre Dr.
Middletown, DE 19709
(302) 383-7575
Andrea Harrington

DSM COMMERCIAL
3304 Old Capitol Trail
Wilmington, DE 19808
(302) 283-1800
Accounts Payable

**HELPING ONE MORE
ENTREPRENEUR**
108 Patriot Drive, Suite A
Middletown, DE 19709
(302) 261-3530
Joseph Richichi

**KEVIN HENSLEY-RE/MAX
ASSOCIATES**
P.O. Box 326
Middletown, DE 19709
(302) 218-0130
Kevin Hensley

**PATTERSON SCHWARTZ
REAL ESTATE**
4417 Summit Bridge Rd.
Middletown, DE 19709
(302) 285-5100

**PREM, INC. - PHOENIX
REAL ESTATE**
651 N. Broad St., Suite 106
Middletown, DE 19709
Michael Davis

RE/MAX 1ST CHOICE
100 S. Broad St.
Middletown, DE 19709
(302) 378-8700
Patricia Shores

RESERVE AT SOUTH RIDGE
1600 Lake Seymour Drive
Middletown, DE 19709
(302) 449-2800
Jessica Lazartic

SWALM REALTY
364 E. Main St., Suite 313
Middletown, DE 19709
(302) 293-4164
Jamie Swalm

**TEAM O'DONNELL -
EXP REALTY**
11 Parkway Circle, Suite 200
New Castle, DE 19720
(302) 598-0189
David O'Donnell

THE PARKER GROUP
108 Patriots Dr, Suite A
Middletown, DE 19708
(302) 217-6692
Dustin Parker

THYME REAL ESTATE CO.
104 W Main St, Suite. B
Middletown, DE 19709
(302) 449-1422
Kim Simpson

TOWN OF WHITEHALL
900 Lorewood Grove Rd.
Middletown, DE 19709
(302) 376-8699
Ronald Myers

REHABILITATION

**CADIA REHABILITATION
BROADMEADOW**
500 South Broad St.
Middletown, DE 19709
(302) 449-3400
Alfred Hylton

**ENCOMPASS HEALTH REHABILITATION
HOSPITAL OF MIDDLETOWN, LLC**
250 East Hampden Road
Middletown, DE 19709
(302) 464-3400
Christie Watlington

RMR RESTORATION
809 Marsh Hawk Ct.
Middletown, DE 19709
(302) 354-1839
Glenn Schwalbe

RESTAURANT

BRINKER CHILIS
501 Merrimac Ave
Middletown, DE 19709
(908) 902-1531
GianCarlo Victorio

CANTWELL'S TAVERN
109 Main St.
Odessa, DE 19730
(302) 376-0600
Megan Saona

CARUSO'S BISTRO
264 Dove Run Centre Dr
Middletown, DE 19709
(302) 449-0000
Jose Guerra

CHESAPEAKE INN RESTAURANT
605 2nd St.
Chesapeake City, MD 21915
(410) 885-2040
Gianmarco Martuscelli

CHICK-FIL-A MIDDLETOWN
701 S. Ridge Avenue
Middletown, DE 19709
(302) 376-7700
Kevin Wood

**CROOKED HAMMOCK BREWERY -
LAVIDA HOSPITALITY**
316 Auto Park Dr
Middletown, DE 19709
(302) 644-7837
Emily Fitzgerald

**DUKART MANAGEMENT /
MCDONALD'S**
580 Middletown Warwick Rd.
Middletown, DE 19709
(302) 378-3936
Lynn Pini

**HAAGEN-DAZS OF
MIDDLETOWN**
7 W Main Street
Middletown, DE 19709
1-302-223-2889
James Henry

JAMESTOWN HOSPITALITY GROUP
2506 W 5th St
Wilmington, DE 19805
(302) 696-5652
April Doughty

LOU LOU IN MIDDLETOWN LLC
12717 Shelbyville Road
Louisville, KY 40243
(502) 657-9227
Jared Matthews

METRO DINER
745 Middletown Warwick Road
Middletown, DE 19709
(302) 314-3838
Rob Copher

MULLIGAN'S
631 Bayview Road
Middletown, DE 19709
(302) 464-1012
Dawn Witte

ODESSA NATIONAL GOLF CLUB
1131 Fieldsboro Rd.
Townsend, DE 19734
(302) 464-1007
Dale Loeslein

**OUTBACK STEAKHOUSE
MIDDLETOWN**
503 Merrimac Avenue
Middletown, DE 19709
(302) 696-2762
Niko Plagianakos

PITHARI
1 West Main Street
Middletown, DE 19709
(302) 570-7600
Cathy Escherich

SELECT PIZZA AND GRILL
311 N. Broad Street
Middletown, DE 19709
(302) 378-4500
Cathy L. Escherich

SURF BAGEL
350 Dove Run Centre Dr
Middletown, DE 19709
(302) 589-7873
Katie Frederick

TWO STONES PUB
840 Kohl ave
Middletown, DE 19709
(302) 378-8199
Michael Stiglitz

RETAIL

MR. MULCH
4821 Summit Bridge Rd
Middletown, DE 19709
(302) 378-1000
Nick Kroll

CAFE DELIGHT FEATURING JJS COFFEEHOUSE
320 Main Street
Townsend, DE 19734
(269) 615-5043
Joseph Bangura

E-BEACH WAGON
3037 Bowlarama Drive
New Castle, DE 19720
Tara Mogan

ROOFING CONTRACTORS

KIRKIN EXTERIORS
1053 Lower Twin Ln Rd
New Castle, DE 19720
(302) 832-7663
Dan Rankin

MOT ROOFING LLC
651 N Broad St., Suite 106
Middletown, DE 19709
302-598-9717
Lisa Poore

PADDY'S, LLC
5207 Summit Bridge Road
Middletown, DE 19709
(302) 388-3625
Tiffany Demond

SEALCOAT SERVICES

MOORE SEALCOAT & STRIPING
204 Morris Rd.
Townsend, DE 19734
(302) 653-7325
David Lewis

SECURITY

SIGNAL SECURITY OF WILMINGTON, DE
910 S. Chapel St, Suite 107
Newark, DE 19713
(302) 753-4125
Marcellus Beasley

STRATEGIC SECURITY SOLUTIONS GROUP LLC (S3G)
120 Lahinch Court
Middletown, DE 19709
(302) 270-4082
Jim Warwick

SECURITY SYSTEMS

JOHNSON CONTROLS
18 Boulden Circle, Suite 24
New Castle, DE 19720
(302) 267-2312
William Gregory

B-SAFE SECURITY
1490 E Lebanon Rd, Ste B10
Dover, DE 19901-5833
(302) 674-2600
Michelle Bordeaux

SEPTIC, PORTABLE TOILETS

A-1 SANITATION SERVICE INC.
1009 River Rd.
New Castle, DE 19720
(302) 322-1074
Steven Smierka

SIGNS

ALPHAGRAPHS - BEAR
140 Fox Hunt Dr
Bear, DE 19701
(302) 353-4400
Ujval Shah

SPRAY LESS WRAPS & GRAPHICS
130 Executive Drive, Suite 3
Newark, DE 19702
(302) 722-5589
Noah Lux

STAFFING

ADECCO - WILMINGTON METRO DE
56 West Main Street, Suite 201
Christiana, DE 19702
(302) 669-4005
Wendy Brooks

1ST STATE STAFFING SOLUTIONS, LLC
112 S. French Street
Wilmington, DE 19801
(302) 285-9044
Gary Carter

STORAGE

A STORAGE DEPOT
730 Hedgelawn Way
Middletown, DE 19709
(302) 376-5696
Nicole Blank

SURVEYING

CLIFTON L. BAKHSH, JR., INC.
4450 Summit Bridge Road
Middletown, DE 19709
(302) 378-8009
Sue Bakhsh

TECHNOLOGY

DIAMOND TECHNOLOGIES
4001 Miller Road, Suite 3, 2nd Floor
Wilmington, DE 19802
(302) 485-1841

RAM TECH SYSTEMS, INC.
125 Rickey Blvd, Unit 778
Bear, DE 19701
(302) 832-6600
Srini Lokula

TELECOMMUNICATIONS

302 MEDIA, LLC
8 The Green, Suite 7584
Dover, DE 19709
(302) 535-4268
Mike Windley

EXERCOMM, INC.
335 Jessica Drive
Middletown, DE 19709
(302) 438-6130
Keith Yocum

VANTAGE UNIFIED COMMUNICATIONS
6805 Lower York Road
New Hope, PA 18938
(267) 756-1043
Diego Villamizar

THEATER

THE EVERETT
47 West Main St.
Middletown, DE 19709
(302) 378-7038
Michelle Truban

WESTOWN MOVIES
150 Commerce Drive
Middletown, DE 19709
(302) 378-2436
Art Helmick

TOWING, HAULING, AUTO GLASS

BETTS GARAGE B&G GLASS CO., INC.
2806 Pulaski Hwy.
Newark, DE 19702
(302) 834-2284
David Betts, Jr.

TRANSMISSION SERVICES

POWER TRANSMISSION SERVICES, INC.
501 Industrial Drive
Middletown, DE 19709
(302) 378-7925
Rick Russell

TRANSPORTATION

DELAWARE TRANSIT CORPORATION
119 Lower Beech Street
Wilmington, DE 19805
(302) 576-6002
L. Albert Loyola

UNIONS

CARPENTERS LOCAL 255
626 Wilmington Rd.
New Castle, DE 19720
(302) 328-9439
Sam Noel

UTILITIES

ARTESIAN WATER COMPANY, INC.
664 Churchmans Road
Newark, DE 19702
(302) 453-6900
Courtney Emerson

CHESAPEAKE UTILITIES CORPORATION
500 Energy Lane, Suite 100
Dover, DE 19901
(302) 736-7846
Vincent Fiorelli

EFFICIENCY SMART
123 Richards Lane
Newark, DE 19711
(302) 396-0169
Carolyn Dehorthy

SCHAGRIN GAS CO.
1000 N. Broad St.
Middletown, DE 19709
(302) 378-2000

SHARP ENERGY
5011 N. Dupont Highway
Dover, DE 19901
(302) 678-2400
Catherine Hutchison

SILVER RUN ELECTRIC LLC
LS POWER DEVELOPMENT LLC
16150 Main Circle Drive, Suite 310
St. Louis, MO 63017
636 532 2200
Nicholas Schwarzbach

VERTERINARY MEDICAL SERVICES

COMPANION ANIMAL VETERINARY ASSOCIATES
5360 Summit Bridge Road
Suites 2 and 3
Middletown, DE 19709
(302) 464-1255
Michelle Crosier

MIDDLETOWN VETERINARY HOSPITAL
366 Warwick Rd
Middletown, DE 19709
(302) 378-2342
Emillie Weiss

VIDA VETERINARY URGENT CARE
300 S Ridge Ave.
Middletown, DE 19709
(302) 676-8432
Sandra Stacey

WILLOW GRACE VETERINARY HOSPITAL
311 W Main St
Middletown, DE 19709
(302) 378-9800

VIDEO PRODUCTIONS

ONCE UPON A MEMORY

4912 Bergman Place
Middletown, DE 19709
(201) 320-4189
Massimo Marini

WASTE MANAGEMENT

SUSTAINABLE ENVIRONMENTAL

Management
755 Governor Lea Road
New Castle, DE 19720
(302) 832-8000
Kevin Liebman

WASTE INDUSTRIES

604 Cannery Ave
Townsend, DE 19734
302-378-5400
Robin Adkins

WASTE MASTERS SOLUTIONS

19 Davidson Lane
New Castle, DE 19720
(302) 530-1742
Deborah Henderson

WEDDING PLANNING

MOMENTS BY BELLA MONROE, LLC

808 Sweet Hollow Ct
Middletown, DE 19709
(302) 465-8690
Marissa Guasperi

BALLROOM AT WINDSOR - MCCARTHY TREE FARM

1061 Dutch Neck Rd
Middletown, DE 19709-9493
1-302-836-3171
Lynette McCarthy

THE PARTY GIRLS

600 N Broad Street, Suite 21
Middletown, DE 19709
(302) 514-7391
Kayla & Madysen

WHOLESALE CLUB

COSTCO WHOLESALE

900 Center Blvd.
Newark, DE 19702
(302) 444-9312
Le'Cinda Waugh

WHOLESALE DISTRIBUTOR

DECISION DISTRIBUTION AMERICA, LLC

4548 Market Street, Suite 215
Philadelphia, PA 19139
(215) 493-4400
Jack Daniels

WINERY

CROW FARM-VINEYARD & WINERY

12441 Vansants Corner Road
Kennedyville, MD 21645
(302) 304-0551
Judy Crow

HARVEST RIDGE WINERY

447 Westville Rd
Marydel, DE 19964
(302) 343-9437
Alexis Nunan





A MESSAGE FROM THE CEO

Dear Middletown Area Business Community and Residents,

It is with great pride and excitement that I welcome you to this year's **Middletown Area Chamber of Commerce Annual Community Guide and Business Directory**. This publication is more than just a resource—it is a celebration of the businesses, organizations, and individuals who drive growth, innovation, and opportunity within our community.

The Middletown area continues to thrive, and much of this success can be attributed to the dedication and collaboration of our business community. At the Chamber, our mission is to foster a strong local economy by providing businesses with the tools, connections, and advocacy they need to succeed. Through networking events, educational programs, and community initiatives, we work to create an environment where businesses flourish and residents enjoy an exceptional quality of life.

This directory serves as your guide to the outstanding businesses and services that make our community vibrant. Whether you are a resident looking to support local businesses, a business owner seeking new connections, or a visitor discovering all that Middletown has to offer, we encourage you to use this resource throughout the year.

We are grateful for the continued support of our members, sponsors, and community partners who make our work possible. Your commitment strengthens the Chamber and fuels the success of our local economy. Thank you for being part of this incredible journey.

Here's to another year of growth, collaboration, and community success!

With Gratitude,

A handwritten signature in black ink that reads "Michelle A Hummel".

Michelle Hummel
CEO, Middletown Area Chamber of Commerce



Betts

GARAGE

Towing & Hauling



Auto Glass

302-834-2284



Truck & Trailer
REPAIR

302-455-9171



Auto Body
PAINT & COLLISION WORK

302-454-7500



Your Trusted Legal Partners For Life's Biggest Challenges and Opportunities

At **Morris James**, we don't just provide legal services—we become your trusted partner through life's pivotal moments. From protecting your family's future, to guiding your business, to standing up for you when accidents happen, we're with you every step of the way.

With Morris James, Expect More.

Why Choose Morris James?

Deep Roots in the Community: With decades of service to Middletown and its surrounding areas, we understand the unique needs of our neighbors and local businesses. Our attorneys combine local knowledge with the resources of a full-service law firm.

Client-Centered Approach: We believe in personalized, compassionate representation. We take the time to listen, understand, and create tailored solutions that align with your goals—whether it's securing compensation, navigating a family dispute, or ensuring your business thrives.

Proven Results: Our team of experienced attorneys has a track record of success, built on the trust of individuals, families, and businesses across Delaware.

Services

- › Business Law
- › Family Law
- › Mass Torts
- › Medical Malpractice
- › Personal Injury
- › Tax & Estates
- › Workers' Comp.
- › Wrongful Death

MorrisJames

morrisjames.com | 302.655.2599 | @MorrisJamesLLP
Wilmington | Newark | Dover | Georgetown | Rehoboth Beach

